





**HEAD**<sup>®</sup>  
SPORTSWEAR

# SUMMER 2025

Summer 25 promises to be really exciting. Once every three years we launch the new CLUB line and it's finally that time again.

We also extended our elegant PERFORMANCE Line, adding a more colorful, fashionable PLAY look and a more PETITE style for the smaller size requirements of southern European and Asian markets.

The Summer 25 collection has a clear structure, in which each line (PERFORMANCE, VISION, CLUB and OFF-COURT) is a self-contained

concept, but can be combined with each other by a sophisticated color map and design language.

This allows us to offer a uniquely versatile and highly customisable summer collection that perfectly embodies the DNA of HEAD.

Roman Stepek  
and the HEAD Sportswear team

# PERFORMANCE

PERFORMANCE COLLECTION SUMMER 2025

Our high-quality PERFORMANCE Line celebrates the traditional tennis look and combines it with the latest technologies.

Our specially developed MXM technology ensures excellent climate management in every match, no matter how intense.

Our polo shirts and T-shirts are characterised by an elegant jacquard structure on the collar. They also include an innovative body mapping technology, to deliver a pleasant cooling effect and a technically sophisticated look.

The colorful PLAY styles, have a distinctly modern, sporty look thanks to the special melange effect of the fabric. The color map combines timeless white and navy with a vibrant light green, fresh grapefruit tones, a radiant sunshine yellow and sporty grey. Our pro athletes at Team HEAD, are all kitted out in PERFORMANCE Line.



VISION COLLECTION SUMMER 2025



Young, dynamic, expressive - that is our VISION Line.

With its modern cuts and fashionable styles it appeals, above all, to Generation Z.

Elaborately processed Mesh Crop Tops or a casual combination of terry shorts and cropped polo shirts playfully combine fashion and sport for women. Casual tracksuits, T-shirts in color block look and tank tops make up the sporty style of the men's VISION Line.

Subdued shades of light green, pink, orange and petrol come in plain colors, light fade-out, multi-color or logo prints as well as polka dots.

# VISION



It's what we've all been waiting for.  
The new CLUB Line is here.

It is designed for a three-year presence in the retail sector to provide a consistent and reliable collection for consumers.

It's ideal for teams, as the designs for women and men are the same. That means building that unique uniform look is incredibly easy.

In addition, individual styles in white and navy are offered in our NOS (never out of stock) programme and are thus also available over the three-year life cycle of each CLUB line.

CLUB

The OFF-COURT Line brings the  
HEAD look from the court to the city.

The pure cotton range celebrates casually cut sweatshirts, sweatshorts, jogger pants and T-shirts and can be seamlessly combined with the styles of the other lines thanks to our versatile color map.

Fresh colors such as sun yellow, grapefruit, coral, pink, light blue, petrol, taupe and light grey as well as an eye-catching 70's Miami Beach Print boldly radiate beautiful summery vibes.



OFF COURT

## COLOR CONCEPT

	PERFOR- MANCE W	PERFOR- MANCE M	VISION W	VISION M	CLUB W	CLUB M	OFF COURT
BASIC COLORS	WH WHITE	WH WHITE	WH WHITE	WH WHITE	WH WHITE	WH WHITE	WH WHITE
	NV NAVY	NV NAVY	NV NAVY	NV NAVY	NV NAVY	NV NAVY	NV NAVY
KEY / CLUB COLORS			BK BLACK		BK BLACK	BK BLACK	
					RD RED	RD RED	
					RO ROYAL	RO ROYAL	
					GM GREY MELANGE	GM GREY MELANGE	
					AN ANTHRA CITE	AN ANTHRA CITE	
FASHION COLORS	GI GRAPE FRUIT	GI GRAPE FRUIT	GI GRAPE FRUIT				GI GRAPE FRUIT
	IG SPICY GREEN	IG SPICY GREEN	IG SPICY GREEN				
	WG WILLOW GREY	WG WILLOW GREY					WG WILLOW GREY
	SW SUN FLOWER						SW SUN FLOWER
	AQ AQUA	AQ AQUA					AQ AQUA
			CN CAMPFIRE ORANGE	CN CAMPFIRE ORANGE			
			CE CELERY GREEN	LL LIGHT LIME			
				TE TEAL			TE TEAL
							TK TEAK
			ZI ALIGHT LILAC				ZI ALIGHT LILAC
							EZ BREEZY ORANGE

## TECHNOLOGIES



### MOISTURE TRANSFER MICROFIBRE

These high-performing microfibres move sweat to the surface of the material where it is efficiently removed. This brings a cooling effect and allows the material to dry quickly. MXM is at its most effective when worn directly on the skin.



### TAPED SEAMS

Seams are a weak point on clothing where moisture and wind can penetrate. That is why the seams on the inside of our products are sealed with tape. This tape is machine-welded onto the seam and closes it completely. We make a distinction between "fully seam taping", where all seams are closed, and "critical seam taping", where only seams that are in critical places, such as the shoulder area, are closed.



### 100 % PFC FREE

Textiles in the outdoor sector are treated with a chemical finish (durable water repellency - DWR) to make them water- and oil-repellent. Fluorocarbon compounds, which are also called per- or polyfluorinated chemicals (PFCs), are usually used for this purpose. These chemicals are controversial because of their harmfulness to both human health and the environment. At HEAD Sportswear, we are striving to convert all fabrics treated with DWR to become PFC-free in the long term. This enables us to protect people and the environment.



PRODUCT  
OVERVIEW  
WOMEN

PERFORMANCE

814015	PERFORMANCE T-Shirt Women	Page 12
814535	Petite PERFORMANCE T-Shirt Women	Page 12
814025	PERFORMANCE Tank Top Women	Page 13
814035	PERFORMANCE Skort Women	Page 13
814505	Petite PERFORMANCE Skort Women	Page 14
814045	PERFORMANCE Dress Women	Page 14
814545	Petite PERFORMANCE Dress Women	Page 15
814115	PLAY TECH Polo Shirt Women	Page 15
814125	PLAY Tech T-Shirt Women	Page 16
814135	PLAY Tech Tank Top Women	Page 16
814515	Petite PLAY Tech Tank Top Women	Page 17
814884	PLAY Skort Women	Page 17
814874	PLAY Shorts Women	Page 18
814525	Petite PLAY Shorts Women	Page 18
814145	PLAY Tech Dress Women	Page 19
814343	ATL Trench Parka Women	Page 19
814393	ATL Tech Marlene Pants Women	Page 20
814503	FLEX Seamless Bra Women	Page 20
814913	FLEX Seamless LS Women	Page 21
814903	FLEX Seamless Tight Women	Page 21

**PERFORMANCE T-SHIRT WOMEN 814015**

FIT regular

FABRIC  
 MAIN FABRIC 100% polyester jacquard with wicking

PRODUCT FEATURES  
 flatknit rib collar  
 raglan sleeve  
 body mapping technology for ventilation of body zones

	XS	S	M	L	XL	XXL	3XL
○ WH							
● NV							



WH



back view



NV

**PERFORMANCE TANK TOP WOMEN 814025**

FIT regular

FABRIC  
 MAIN FABRIC 100% polyester jacquard with wicking

PRODUCT FEATURES  
 flatknit rib collar  
 feminin v-neck  
 body mapping technology for ventilation of body zones  
 sublimated front side

	XS	S	M	L	XL	XXL	3XL
● NV							
○ WH							
⊗ XPWG							
⊗ XPAQ							



NV



back view



WH



XPWG



XPAQ

**PETITE PERFORMANCE T-SHIRT WOMEN 814535**

FIT regular

FABRIC  
 MAIN FABRIC 100% polyester jacquard with wicking

PRODUCT FEATURES  
 flatknit rib collar  
 raglan sleeve  
 body mapping technology for ventilation of body zones

	XS	S	M	L	XL	XXL	3XL
○ WH							
● NV							



WH



back view



NV

**PERFORMANCE SKORT WOMEN 814035**

FIT regular

FABRIC  
 MAIN FABRIC 75% polyester 25% elastane(spandex) interlock with wicking  
 2ND FABRIC 90,5% polyester 9,5% elastane(spandex) closed mesh with wicking  
 3RD FABRIC 85% polyester 15% elastane(spandex) single jersey with wicking

PRODUCT FEATURES  
 high waistband with elastic inside  
 box pleats on front and back  
 integrated inner pants

	XS	S	M	L	XL	XXL	3XL
● NV							
● IG							
● GI							
○ WH							



NV



back view



IG



GI



WH

**PETITE PERFORMANCE SKORT WOMEN 814505**

FIT regular

**FABRIC**  
**MAIN FABRIC** 75% polyester 25% elastane(spandex) interlock with wicking  
**2ND FABRIC** 90,5% polyester 9,5% elastane(spandex) closed mesh with wicking  
**3RD FABRIC** 85% polyester 15% elastane(spandex) single jersey with wicking



**PRODUCT FEATURES**  
 high waistband with elastic inside  
 box pleats on front and back  
 integrated inner pants

	XS	S	M	L	XL	XXL	3XL
<input checked="" type="radio"/> NV							
<input type="radio"/> WH							



NV



back view



WH

**PETITE PERFORMANCE DRESS WOMEN 814545**

FIT regular

**FABRIC**  
**MAIN FABRIC** 75% polyester 25% elastane(spandex) interlock with wicking  
**2ND FABRIC** 90,5% polyester 9,5% elastane(spandex) closed mesh with wicking  
**3RD FABRIC** 85% polyester 15% elastane(spandex) single jersey with wicking



**PRODUCT FEATURES**  
 round neck collar  
 low waist  
 tailored dividing seams  
 separate inner pants

	XS	S	M	L	XL	XXL	3XL
<input type="radio"/> WH							
<input checked="" type="radio"/> NV							



WH



back view



NV

**PERFORMANCE DRESS WOMEN 814045**

FIT regular

**FABRIC**  
**MAIN FABRIC** 75% polyester 25% elastane(spandex) interlock with wicking  
**2ND FABRIC** 90,5% polyester 9,5% elastane(spandex) closed mesh with wicking  
**3RD FABRIC** 85% polyester 15% elastane(spandex) single jersey with wicking



**PRODUCT FEATURES**  
 round neck collar  
 low waist  
 tailored dividing seams  
 separate inner pants

	XS	S	M	L	XL	XXL	3XL
<input type="radio"/> WH							
<input checked="" type="radio"/> NV							



WH



back view



NV

**PLAY TECH POLO SHIRT WOMEN 814115**

FIT loose

**FABRIC**  
**MAIN FABRIC** 100% polyester single jersey melange with wicking  
**2ND FABRIC** 90,5% polyester 9,5% elastane(spandex) closed mesh with wicking



**PRODUCT FEATURES**  
 flatknit rib on collar and sleeve opening  
 closed mesh insert on shoulder  
 button panel on centre front  
 loose fit

	XS	S	M	L	XL	XXL	3XL
<input checked="" type="radio"/> WG							
<input checked="" type="radio"/> NV							



WG



back view



NV



**PLAY TECH T-SHIRT WOMEN 814125**

FIT loose

**FABRIC**  
 MAIN FABRIC 100% polyester single jersey melange with wicking  
 2ND FABRIC 90,5% polyester 9,5% elastane(spandex) closed mesh with wicking



**PRODUCT FEATURES**  
 round neckline  
 closed mesh insert on shoulder  
 rib on sleeve opening  
 loose fit

	XS	S	M	L	XL	XXL	3XL
● NV							
● WG							
● SW							



NV



back view



WG



SW

**PETITE PLAY TECH TANK TOP WOMEN 814515**

FIT regular

**FABRIC**  
 MAIN FABRIC 100% polyester single jersey melange with wicking  
 2ND FABRIC 90,5% polyester 9,5% elastane(spandex) closed mesh with wicking



**PRODUCT FEATURES**  
 body hugging tank top  
 deep female neckline

	XS	S	M	L	XL	XXL	3XL
● SW							
● WG							
● NV							



SW



back view



WG



NV

**PLAY TECH TANK TOP WOMEN 814135**

FIT regular

**FABRIC**  
 MAIN FABRIC 100% polyester single jersey melange with wicking  
 2ND FABRIC 90,5% polyester 9,5% elastane(spandex) closed mesh with wicking



**PRODUCT FEATURES**  
 body hugging tank top  
 deep female neckline

	XS	S	M	L	XL	XXL	3XL
● SW							
● WG							
● NV							



SW



back view



WG



NV

**PLAY SKORT WOMEN 814884**

FIT regular

**FABRIC**  
 MAIN FABRIC 86% polyester 14% elastane(spandex) 4-way stretch with wicking  
 2ND FABRIC 85% polyester 15% elastane(spandex) power mesh with wicking  
 3RD FABRIC 85% polyester 15% elastane(spandex) single jersey with wicking



**PRODUCT FEATURES**  
 high elasticated waistband with draw cord adjustment  
 ball pocket at back waistband  
 side slits  
 integrated inner pants

	XS	S	M	L	XL	XXL	3XL
● SW							
● WG							
● NV							
○ WH							



SW



back view



WG



NV



WH

**PLAY SHORTS WOMEN 814874**

FIT regular

**FABRIC**  
 MAIN FABRIC 86% polyester 14% elastane(spandex) 4-way stretch with wicking



**PRODUCT FEATURES**  
 high elasticated waistband with draw cord adjustment  
 slip in pockets  
 side slits

	XS	S	M	L	XL	XXL	3XL
○ WH							
● NV							
● WG							
● SW							



**PETITE PLAY SHORTS WOMEN 814525**

FIT regular

**FABRIC**  
 MAIN FABRIC 86% polyester 14% elastane(spandex) 4-way stretch with wicking



**PRODUCT FEATURES**  
 high elasticated waistband with draw cord adjustment  
 slip in pockets  
 side slits

	XS	S	M	L	XL	XXL	3XL
○ WH							
● NV							
● WG							
● SW							



**PLAY TECH DRESS WOMEN 814145**

FIT regular

**FABRIC**  
 MAIN FABRIC 100% polyester single jersey melange with wicking  
 2ND FABRIC 90,5% polyester 9,5% elastane(spandex) closed mesh with wicking  
 3RD FABRIC 85% polyester 15% elastane(spandex) single jersey with wicking



**PRODUCT FEATURES**  
 v-cut out on back  
 contrast mesh insert on shoulder and back  
 contrast piping on front and back  
 slit on front right seam  
 separate inner pants

	XS	S	M	L	XL	XXL	3XL
● NV							
● SW							
● WG							



**ATL TRENCH PARKA WOMEN 814343**

FIT over size

**FABRIC**  
 MAIN FABRIC 100% polyester 2/2 twill way mechanical stretch  
 LINING 100% polyamide taffeta

**PRODUCT FEATURES**  
 1-way SAB@ zipper on front  
 seam taped  
 open back yoke  
 inside SAB@zipper pocket  
 2 pockets on front  
 velcro on sleeve opening  
 adjustable cord inside hood and waist

	S	M	L
● NV			



**ATL TECH MARLENE PANTS WOMEN 814393**

FIT regular

**FABRIC**  
 MAIN FABRIC 93% polyester 7% elastane(spandex) woven



**PRODUCT FEATURES**  
 high waistband with main fabric belt  
 fake weld pocket on back  
 slip in pockets  
 SAB® zip fly  
 adjustment SAB® zipper on back leg

	XS	S	M	L	XL	XXL	3XL
● NV							



NV



back view



back view

**FLEX SEAMLESS LS WOMEN 814913**

FIT tight

**FABRIC**  
 MAIN FABRIC 97% polyamide 3% elastane(spandex) knit



**PRODUCT FEATURES**  
 seamless body mapping design  
 fabric is engineered by zone giving each area the unique structure  
 high stretching function

	S	M	L
● NV			
○ WH			



NV



back view



WH

**FLEX SEAMLESS BRA WOMEN 814503**

FIT tight

**FABRIC**  
 MAIN FABRIC 85% polyamide 15% elastane(spandex) knit



**PRODUCT FEATURES**  
 seamless body mapping design  
 fabric is engineered by zone giving each area the unique structure  
 racer back

	S	M	L
○ WH			
● NV			



WH



back view



NV

**FLEX SEAMLESS TIGHT WOMEN 814903**

FIT tight

**FABRIC**  
 MAIN FABRIC 97% polyamide 3% elastane(spandex) knit



**PRODUCT FEATURES**  
 seamless body mapping design  
 fabric is engineered by zone, giving each area the unique structure  
 high stretching function

	S	M	L
○ WH			
● NV			



WH



back view



NV



PRODUCT OVERVIEW MEN

PERFORMANCE

811005	PERFORMANCE Polo Shirt Men	Page 24
811505	Petite PERFORMANCE Polo Shirt Men	Page 24
811015	PERFORMANCE T-Shirt Men	Page 25
811525	Petite PERFORMANCE T-Shirt Men	Page 25
811504	PERFORMANCE Shorts Men	Page 26
811515	Petite PERFORMANCE Shorts Men	Page 26
811075	PLAY Tech Polo Shirt Men	Page 27
811085	PLAY Tech T-Shirt Men	Page 27
811125	PLAY Shorts Men	Page 28
811913	FLEX Seamless LS Men	Page 28
811903	FLEX Seamless Tight Men	Page 29

**PERFORMANCE POLO SHIRT MEN 811005**

FIT regular

**FABRIC**  
 MAIN FABRIC 100% polyester jacquard with wicking



**PRODUCT FEATURES**  
 flatknit collar with jacquard structure  
 raglan sleeve  
 3-buttoned placket with HEAD branded buttons  
 body mapping technology for ventilation of body zones

	S	M	L	XL	XXL	3XL
<input type="radio"/> WH						
<input checked="" type="radio"/> NV						



WH



back view



NV

**PETITE PERFORMANCE POLO SHIRT MEN 811505**

FIT regular

**FABRIC**  
 MAIN FABRIC 100% polyester jacquard with wicking



**PRODUCT FEATURES**  
 flatknit collar with jacquard structure  
 raglan sleeve  
 3-buttoned placket with HEAD branded buttons  
 body mapping technology for ventilation of body zones

	S	M	L	XL	XXL	3XL
<input type="radio"/> WH						
<input checked="" type="radio"/> NV						



WH



back view



NV

**PERFORMANCE T-SHIRT MEN 811015**

FIT regular

**FABRIC**  
 MAIN FABRIC 100% polyester jacquard with wicking



**PRODUCT FEATURES**  
 flatknit rib collar  
 raglan sleeve  
 body mapping technology for ventilation of body zones  
 sublimated front and sleeve

	S	M	L	XL	XXL	3XL
<input checked="" type="radio"/> NV						
<input type="radio"/> WH						
<input type="radio"/> XPWG						
<input checked="" type="radio"/> XPAQ						



NV



back view



WH



XPWG



XPAQ

**PETITE PERFORMANCE T-SHIRT MEN 811525**

FIT regular

**FABRIC**  
 MAIN FABRIC 100% polyester jacquard with wicking



**PRODUCT FEATURES**  
 flatknit rib collar  
 raglan sleeve  
 body mapping technology for ventilation of body zones

	S	M	L	XL	XXL	3XL
<input checked="" type="radio"/> NV						
<input type="radio"/> WH						



NV



back view



WH

**PERFORMANCE SHORTS MEN 811504**

FIT regular

**FABRIC**  
 MAIN FABRIC 86% polyester 14% elastane(spandex) 4-way stretch with wicking  
 2ND FABRIC 100% polyester mesh



**PRODUCT FEATURES**  
 elastic waistband with contrast stipe and draw cord adjustment  
 special slit design on front for perfect freedom of movement  
 slip in pockets with special slit to increase pocket volume

	S	M	L	XL	XXL	3XL
● NV						
○ WH						



NV



back view



WH

**PETITE PERFORMANCE SHORTS MEN 811515**

FIT regular

**FABRIC**  
 MAIN FABRIC 86% polyester 14% elastane(spandex) 4-way stretch with wicking  
 2ND FABRIC 100% polyester mesh



**PRODUCT FEATURES**  
 elastic waistband with contrast stipe and draw cord adjustment  
 special slit design on front for perfect freedom of movement  
 slip in pockets with special slit to increase pocket volume

	S	M	L	XL	XXL	3XL
● NV						
○ WH						



NV



back view



WH

**PLAY TECH POLO SHIRT MEN 811075**

FIT regular

**FABRIC**  
 MAIN FABRIC 100% polyester single jersey melange with wicking  
 2ND FABRIC 90,5% polyester 9,5% elastane(spandex) closed mesh with wicking



**PRODUCT FEATURES**  
 rib colleague collar  
 short button placket  
 decorative flatlock seam on front and back  
 closed mesh insert on back and sleeve opening

	S	M	L	XL	XXL	3XL
● WG						
● NV						



WG



back view



NV

**PLAY TECH T-SHIRT MEN 811085**

FIT regular

**FABRIC**  
 MAIN FABRIC 100% polyester single jersey melange with wicking  
 2ND FABRIC 90,5% polyester 9,5% elastane(spandex) closed mesh with wicking



**PRODUCT FEATURES**  
 round neck line  
 decorative flatlock seam on front and back  
 closed mesh insert on back and sleeve opening

	S	M	L	XL	XXL	3XL
● NV						
● IG						
● GI						
● WG						



NV



back view



IG



GI



WG

**PLAY SHORTS MEN 811125**

FIT regular

**FABRIC**  
 MAIN FABRIC 86% polyester 14% elastane(spandex) 4-way stretched with wicking



**PRODUCT FEATURES**  
 elasticated waistband with draw cord adjustment  
 draw cord with multi thread tip end  
 slip in pockets with topstitching

	S	M	L	XL	XXL	3XL
● GI						
● IG						
● NV						
○ WH						



GI



back view



IG



NV



WH



back view



NV



WH



**FLEX SEAMLESS LS 811913**

FIT tight

**FABRIC**  
 MAIN FABRIC 97% polyamide 3% elastane(spandex) knit

**PRODUCT FEATURES**  
 seamless body mapping design  
 fabric is engineered by zone giving each area the unique structure  
 high stretching function

	M	L	XL
○ WH			
● NV			

**FLEX SEAMLESS TIGHT MEN 811903**

FIT tight

**FABRIC**  
 MAIN FABRIC 97% polyamide 3% elastane(spandex) knit



**PRODUCT FEATURES**  
 seamless body mapping design  
 fabric is engineered by zone giving each area the unique structure  
 high stretching function

	M	L	XL
● NV			



NV



back view

PERFORMANCE CAPSULE SWEATSHIRT UNISEX

811434

FIT loose



FABRIC

MAIN FABRIC 100% cotton terry

PRODUCT FEATURES

- round neck collar
- rib cuff at bottom and sleeve opening
- print mix on front

	XS	S	M	L	XL	XXL	3XL
GM							



GM



back view





PRODUCT  
OVERVIEW  
WOMEN

VISION

814205	TIE-BREAK T-Shirt Women	Page 34
814225	SPIRIT Tank Top Women	Page 34
814435	SPIRIT II Tank Top Women	Page 35
814235	MOVE Tank Top Women	Page 35
814265	MOVE Crop Top Women	Page 36
814275	SPIRIT Dress Women	Page 36
814285	DYNAMIC Skort Women	Page 37
814295	MOVE Skort Women	Page 37
814305	DYNAMIC Shorts Women	Page 38
814335	TECH Tights Women	Page 38
814325	TECH 3/4 Tights Women	Page 39
814714	TECH Short Tights Women	Page 39
814315	TECH Panty Women	Page 40
814345	VISION Jacket Women	Page 40
814355	VISION Pants Women	Page 41
814365	BLUR Jacket Women	Page 41
814375	PRY Crop Polo Women	Page 42
814385	PRY Shorts Women	Page 42
814445	RAINBOW T-Shirt Women	Page 43
814395	LARA T-Shirt Women	Page 43
814405	VISION T-Shirt Women	Page 44
814415	RALLY Crewneck Women	Page 44
814425	RALLY Hoodie Women	Page 45
814075	BREAKER Jacket Women	Page 45
814085	BREAKER Pants Women	Page 46

**TIE-BREAK T-SHIRT WOMEN 814205**

FIT regular

**FABRIC**  
 MAIN FABRIC 100% polyester interlock with wicking  
 2ND FABRIC 100% polyester jacquard double knit with wicking

**PRODUCT FEATURES**  
 round feminine neckline  
 contrast mesh insert on side for enhanced breathability  
 two slits on front

	XS	S	M	L	XL	XXL	3XL
☉ XWZI							
○ WH							
● NV							
● ZI							
☉ XWCE							

M MOISTURE TRANSFER MICROFIBRE



XWZI



back view



side view



WH



XWCE



ZI



NV

**SPIRIT TANK TOP WOMEN 814225**

FIT loose

**FABRIC**  
 MAIN FABRIC 100% polyester interlock with wicking  
 2ND FABRIC 100% polyester jacquard double knit with wicking

**PRODUCT FEATURES**  
 contrast mesh insert on side for enhanced breathability  
 upper chest on front and back with double layer  
 two slits on front

	XXS	XS	S	M	L	XL	XXL	3XL
☉ XWCE								
☉ XWZI								
● ZI								
● CN								
● CE								
● NV								
○ WH								

M MOISTURE TRANSFER MICROFIBRE



XWCE



back view



side view



XWZI



WH



NV



CE



CN



ZI

**SPIRIT II TANK TOP WOMEN 814435**

FIT tight

**FABRIC**  
 MAIN FABRIC 100% polyester interlock with wicking

**PRODUCT FEATURES**  
 round feminine neckline  
 very tight fit  
 sublimated at front side

	XXS	XS	S	M	L	XL	XXL	3XL
● ZI								
● CN								
● CE								
○ WH								
● IGXR								
● GIXR								

M MOISTURE TRANSFER MICROFIBRE



ZI



back view



CN



CE



GIXR



IGXR



WH

**MOVE TANK TOP WOMEN 814235**

FIT loose

**FABRIC**  
 MAIN FABRIC 100% polyester mesh

**PRODUCT FEATURES**  
 round neckline  
 cut out at front panel  
 WISHBONE flag label on left side hem

	XXS	XS	S	M	L	XL	XXL	3XL
☉ CNWH								
☉ CEWH								
☉ ZIWH								



CNWH



back view



CEWH



ZIWH

**MOVE CROP TOP WOMEN 814265**

FIT tight

**FABRIC**  
 MAIN FABRIC 85% polyester 15% elastane(spandex) single jersey with wicking  
 2ND FABRIC 100% polyester mesh



**PRODUCT FEATURES**  
 short cut  
 cut out at front panel  
 WISHBONE flag label on left side hem

	XXS	XS	S	M	L	XL	XXL	3XL
● CNWH								
● CEWH								



CNWH



back view



CEWH

**SPIRIT DRESS WOMEN 814275**

FIT loose

**FABRIC**  
 MAIN FABRIC 100% polyester interlock with wicking  
 2ND FABRIC 100% polyester jacquard double knit with wicking  
 3RD FABRIC 85% polyester 15% elastane(spandex) single jersey with wicking



**PRODUCT FEATURES**  
 contrast mesh insert on side for enhanced breathability  
 upper chest on front and back with double layer  
 two slits on front  
 separate inner pants

	XXS	XS	S	M	L	XL	XXL	3XL
● CE								
● ZI								
● NV								
○ WH								



CE



back view



side view



ZI



WH



NV

**DYNAMIC SKORT WOMEN 814285**

FIT regular

**FABRIC**  
 MAIN FABRIC 100% polyester 4-way stretch woven with wicking  
 2ND FABRIC 85% polyester 15% elastane(spandex) single jersey with wicking



**PRODUCT FEATURES**  
 high waistband  
 elasticated waistband with draw cord adjustment  
 small slits  
 cut & sewn design  
 integrated inner pants

	XXS	XS	S	M	L	XL	XXL	3XL
● CN								
● ZI								
● CE								
● NV								
○ WH								



CN



back view



ZI



CE



WH



NV

**MOVE SKORT WOMEN 814295**

FIT regular

**FABRIC**  
 MAIN FABRIC 85% polyester 15% elastane(spandex) single jersey with wicking



**PRODUCT FEATURES**  
 high waist with elastic inside  
 yoke at front and back  
 integrated inner pants

	XXS	XS	S	M	L	XL	XXL	3XL
● NV								
● CE								
● CN								
● ZI								
○ WH								



NV



back view



CE



CN



WH



ZI

**DYNAMIC SHORTS WOMEN 814305**

FIT regular

FABRIC  
 MAIN FABRIC 100% polyester 4-way stretch woven with wicking



PRODUCT FEATURES  
 high waistband  
 elasticated waistband with draw cord adjustment  
 slip in pockets  
 small slits  
 cut & sewn design

	XS	S	M	L	XL	XXL	3XL
● CE							
○ WH							
● NV							
● CN							
● ZI							



**TECH TIGHTS WOMEN 814335**

FIT tight

FABRIC  
 MAIN FABRIC 84% polyester 16% elastane(spandex) knit  
 2ND FABRIC 85% polyester 15% elastane(spandex) power mesh

PRODUCT FEATURES  
 high waistband for optimal fit comfort  
 ball pocket on each leg side

	XS	S	M	L	XL	XXL	3XL
● ZI							
● CE							
● BK							
● NV							



**TECH 3/4 TIGHTS WOMEN 814325**

FIT tight

FABRIC  
 MAIN FABRIC 84% polyester 16% elastane(spandex) knit  
 2ND FABRIC 85% polyester 15% elastane(spandex) power mesh

PRODUCT FEATURES  
 high waistband for optimal fit comfort  
 ball pocket on each leg side

	XS	S	M	L	XL	XXL	3XL
● BK							
● NV							



**TECH SHORT TIGHTS WOMEN 814714**

FIT tight

FABRIC  
 MAIN FABRIC 84% polyester 16% elastane(spandex) knit

PRODUCT FEATURES  
 high waistband for optimal fit comfort

	XS	S	M	L	XL	XXL	3XL
● BK							
● ZI							
● NV							



**TECH PANTY WOMEN 814315**

FIT tight

FABRIC  
 MAIN FABRIC 84% polyester 16% elastane(spandex) knit

PRODUCT FEATURES  
 high waistband for optimal fit comfort  
 7cm longer than 814714 TECH Short Tights Women

	XXS	XS	S	M	L	XL	XXL	3XL
● NV								
○ WH								



NV



back view



WH

**VISION PANTS WOMEN 814355**

FIT loose

FABRIC  
 MAIN FABRIC 100% polyamide woven

PRODUCT FEATURES  
 elasticated waistband with draw cord adjustment  
 slip in pockets  
 contrast piping at pocket opening  
 matching perfect to 814345 VISION Jacket Women

	XS	S	M	L	XL	XXL	3XL
● NV							



NV



back view



side view

**VISION JACKET WOMEN 814345**

FIT regular

FABRIC  
 MAIN FABRIC 100% polyamide woven

PRODUCT FEATURES  
 1:1 rib collar  
 1-way SAB® zipper in centre front  
 welt pocket  
 contrast piping at pocket opening  
 elastic cuff with smocked look  
 matching perfect to 814355 VISION Pants Women

	XS	S	M	L	XL	XXL	3XL
● NV							



NV



back view

**BLUR JACKET WOMEN 814365**

FIT regular

FABRIC  
 MAIN FABRIC 100% polyester woven

PRODUCT FEATURES  
 string inside back to fix the hood  
 1-way SAB® zipper in centre front  
 welt pocket  
 elastic sleeve and bottom hem  
 all over print

	XS	S	M	L	XL	XXL	3XL
● PRT							



PRT



back view

**PRY CROP POLO WOMEN 814375**

FIT regular

**FABRIC**

MAIN FABRIC 83% cotton 17% polyester terry knit

**PRODUCT FEATURES**

collar and sleeve insert out of main fabric up side down  
 button placket with HEAD branded buttons  
 short cut  
 elasticated hem

	XXS	XS	S	M	L	XL	XXL	3XL
<input checked="" type="radio"/> ZI								
<input type="radio"/> WH								



ZI



back view



WH

**PRY SHORTS WOMEN 814385**

FIT regular

**FABRIC**

MAIN FABRIC 83% cotton 17% polyester terry knit

**PRODUCT FEATURES**

high waistband with elastic inside  
 side slits

	XXS	XS	S	M	L	XL	XXL	3XL
<input type="radio"/> WH								
<input checked="" type="radio"/> ZI								



WH



WH



ZI

**RAINBOW T-SHIRT WOMEN 814445**

FIT regular

**FABRIC**

MAIN FABRIC 57% polyester 38% cotton 5% elastane(spandex) single jersey with wicking



**PRODUCT FEATURES**

rib crew neck collar  
 technical mix of polyester and cotton for increased moisture absorbing properties  
 print on front panel  
 WISHBONE flag label at left sleeve

	XS	S	M	L	XL	XXL	3XL
<input type="radio"/> WH							
<input checked="" type="radio"/> NV							
<input type="radio"/> CE							
<input type="radio"/> CN							



WH



back view



NV



CE



CN



back view



NV



WH

**LARA T-SHIRT WOMEN 814395**

FIT regular

**FABRIC**

MAIN FABRIC 57% polyester 38% cotton 5% elastane(spandex) single jersey with wicking



**PRODUCT FEATURES**

rib crew neck collar  
 technical mix of polyester and cotton for increased moisture absorbing properties  
 print on front panel  
 WISHBONE flag label at left sleeve

	XS	S	M	L	XL	XXL	3XL
<input checked="" type="radio"/> ZI							
<input type="radio"/> NV							
<input type="radio"/> WH							



ZI

**VISION T-SHIRT WOMEN 814405**

FIT regular

**FABRIC**  
 MAIN FABRIC 57% cotton 38% polyester 5% elastane(spandex) single jersey with wicking

M  
 MOISTURE  
 TRANSFER  
 M  
 MICROFIBRE

**PRODUCT FEATURES**  
 rib crew neck collar  
 technical mix of polyester and cotton for increased moisture absorbing properties  
 print on front panel  
 WISHBONE flag label at left sleeve

	XS	S	M	L	XL	XXL	3XL
WHCN							



WHCN



back view

**RALLY HOODIE WOMEN 814425**

FIT loose

**FABRIC**  
 MAIN FABRIC 60% cotton 40% polyester french terry

**PRODUCT FEATURES**  
 hood with draw cord adjustment  
 inside out insert on shoulder  
 lined hood  
 rib cuff at bottom and sleeve opening  
 print at front panel  
 kangaroo pocket

	XS	S	M	L	XL	XXL	3XL
NV							
CE							



NV



back view



CE

**RALLY CREWNECK WOMEN 814415**

FIT loose

**FABRIC**  
 MAIN FABRIC 60% cotton 40% polyester french terry

**PRODUCT FEATURES**  
 rib crew neck collar  
 inside out insert on shoulder  
 rib cuff at bottom and sleeve hem  
 print at front panel

	XS	S	M	L	XL	XXL	3XL
ZI							
WH							



ZI



back view



WH

**BREAKER JACKET WOMEN 814075**

FIT regular

**FABRIC**  
 MAIN FABRIC 100% polyester woven

**PRODUCT FEATURES**  
 1-way SAB® zipper in centre front  
 stand up collar  
 welt pocket  
 elasticated hem with draw cord adjustment  
 matching perfect to 814085 BREAKER Pants Women

	XS	S	M	L	XL	XXL	3XL
WH							
NV							
ZI							



WH



back view



NV



ZI

**BREAKER PANTS WOMEN 814085**

FIT regular

**FABRIC**

MAIN FABRIC 100% polyester woven

**PRODUCT FEATURES**

elasticted waistband with draw cord adjustment

welt pocket

cuff at leg elastic inside

bottom hem side opening with SAB® zipper

matching perfect to 814075 BREAKER Jacket Women

	XS	S	M	L	XL	XXL	3XL
○ WH							
● NV							



WH



back view



side view



NV







PRODUCT  
OVERVIEW  
MEN

811205	SLICE Polo Shirt Men	Page 50
811215	SLICE T-Shirt Men	Page 50
811265	SLICE II T-Shirt Men	Page 51
811225	SLICE Tank Top Men	Page 51
811235	TOPSPIN T-Shirt Men	Page 52
811245	TOPSPIN Hoodie Men	Page 52
811255	POWER Shorts Men	Page 53
811345	VISION Jacket Men	Page 53
811355	VISION Pants Men	Page 54
811365	BLUR Jacket Men	Page 54
811435	RAINBOW T-Shirt Men	Page 55
811395	CARL T-Shirt Men	Page 55
811405	VISION T-Shirt Men	Page 56
811415	RALLY Crewneck Men	Page 56
811425	RALLY Hoodie Men	Page 57
811035	BREAKER Jacket Men	Page 57
811045	BREAKER Pants Men	Page 58

VISION

**SLICE POLO SHIRT MEN 811205**

FIT regular

**FABRIC**  
 MAIN FABRIC 100% polyester interlock with wicking  
 2ND FABRIC 100% polyester jacquard double knit with wicking

**PRODUCT FEATURES**  
 main fabric polo collar  
 3-buttoned placket with HEAD branded buttons  
 mesh side insert for enhanced breathability

	S	M	L	XL	XXL	3XL
● NV						
○ WH						



NV



back view



side view



WH

**SLICE T-SHIRT MEN 811215**

FIT regular

**FABRIC**  
 MAIN FABRIC 100% polyester interlock with wicking  
 2ND FABRIC 100% polyester jacquard double knit with wicking

**PRODUCT FEATURES**  
 round neckline  
 mesh side insert for enhanced breathability  
 block color design

	XS	S	M	L	XL	XXL	3XL
○ WH							
● NV							
● TE							
● CN							
● LL							



WH



back view



side view



NV



LL



CN



TE

**SLICE II T-SHIRT MEN 811265**

FIT loose

**FABRIC**  
 MAIN FABRIC 100% polyester interlock with wicking

**PRODUCT FEATURES**  
 round neckline  
 loose fit

	XS	S	M	L	XL	XXL	3XL
● LL							
● CN							
● TE							



LL



back view



CN



TE

**SLICE TANK TOP MEN 811225**

FIT loose

**FABRIC**  
 MAIN FABRIC 100% polyester interlock with wicking  
 2ND FABRIC 100% polyester jacquard double knit with wicking

**PRODUCT FEATURES**  
 round neckline  
 contrast color on collar and armhole opening  
 mesh insert on side for enhanced breathability

	XS	S	M	L	XL	XXL	3XL
● CN							
● NV							
● LL							



CN



back view



side view



NV



LL

**TOPSPIN T-SHIRT MEN 811235**

FIT regular

**FABRIC**  
 MAIN FABRIC 100% polyester interlock with wicking



**PRODUCT FEATURES**  
 v-neckline  
 sublimated print on front

	XS	S	M	L	XL	XXL	3XL
<input checked="" type="checkbox"/> XNVV							
<input checked="" type="checkbox"/> XVLL							
<input checked="" type="checkbox"/> XVCN							
<input checked="" type="checkbox"/> GIXP							



XNVV



back view



XVLL



XVCN



GIXP



back view



NVLL



LLTE

**TOPSPIN HOODIE MEN 811245**

FIT regular

**FABRIC**  
 MAIN FABRIC 100% polyester micro-polyester twill with wicking



**PRODUCT FEATURES**  
 half front SAB® zipper with chin protection  
 two front pockets  
 contrast print on front  
 elasticated bottom opening

	S	M	L	XL	XXL	3XL
<input checked="" type="checkbox"/> LLTE						
<input checked="" type="checkbox"/> NVLL						

**POWER SHORTS MEN 811255**

FIT regular

**FABRIC**  
 MAIN FABRIC 100% polyester 4-way stretched woven with wicking  
 2ND FABRIC 100% polyester jacquard double knit with wicking



**PRODUCT FEATURES**  
 contrast elastic waistband  
 closed mesh insert on side for enhanced breathability

	XS	S	M	L	XL	XXL	3XL
<input checked="" type="checkbox"/> TE							
<input type="checkbox"/> WH							
<input type="checkbox"/> NV							
<input type="checkbox"/> CN							
<input type="checkbox"/> LL							



TE



back view



side view



WH



LL



CN



NV

**VISION JACKET MEN 811345**

FIT regular

**FABRIC**  
 MAIN FABRIC 100% polyamide woven fabric

**PRODUCT FEATURES**  
 1-way SAB® zipper centre front  
 1:1 rib collar  
 welt pocket  
 contrast sleeve insert  
 elastic cuff with smocked look  
 matching perfect to 811355 VISION Pants Men

	S	M	L	XL	XXL	3XL
<input checked="" type="checkbox"/> NV						



NV



back view

**VISION PANTS MEN 811355**

FIT regular

**FABRIC**  
 MAIN FABRIC 100% polyamide woven

**PRODUCT FEATURES**  
 elastic waistband with contrast stripe  
 welt pocket  
 contrast side insert  
 matching perfect to 811345 VISION Jacket Men

	S	M	L	XL	XXL	3XL
● NV						



NV



back view



side view

**BLUR JACKET MEN 811365**

FIT regular

**FABRIC**  
 MAIN FABRIC 100% polyester woven  
 LINING

**PRODUCT FEATURES**  
 string inside back to fix the hood  
 1-way SAB® zipper centre front  
 welt pocket  
 elastic sleeve and bottom hem  
 all over print

	S	M	L	XL	XXL	3XL
● PRT						



PRT



back view

**RAINBOW T-SHIRT MEN 811435**

FIT regular

**FABRIC**  
 MAIN FABRIC 57% polyester 38% cotton 5% elastane(spandex) single jersey with wicking

**PRODUCT FEATURES**  
 rib crew neck collar  
 technical mix of polyester and cotton for increased moisture absorbing properties  
 print on front panel  
 WISHBONE flag label at left sleeve

	S	M	L	XL	XXL	3XL
● LL						
● CN						
● TE						
● NV						
○ WH						

M MOISTURE MANAGER M MICROPERME



LL



back view



CN



TE



WH



NV

**CARL T-SHIRT MEN 811395**

FIT regular

**FABRIC**  
 MAIN FABRIC 57% polyester 38% cotton 5% elastane(spandex) single jersey with wicking

**PRODUCT FEATURES**  
 rib crew neck collar  
 technical mix of polyester and cotton for increased moisture absorbing properties  
 print on front panel  
 WISHBONE flag label at left sleeve

	XS	S	M	L	XL	XXL	3XL
● TE							
● CN							
○ WH							
● NV							

M MOISTURE MANAGER M MICROPERME



TE



back view



CN



WH



NV

**VISION T-SHIRT MEN 811405**

FIT regular

**FABRIC**  
 MAIN FABRIC 57% cotton 38% polyester 5% elastane(spandex) single jersey with wicking

M  
 MOISTURE  
 TRANSFER  
 M  
 MICROFIBRE

**PRODUCT FEATURES**  
 rib crew neck collar  
 technical mix of polyester and cotton for increased moisture absorbing properties  
 print on front panel  
 WISHBONE flag label at left sleeve

	S	M	L	XL	XXL	3XL
<input checked="" type="radio"/> WHLL						
<input type="radio"/> WH						



WHLL



back view



WH

**RALLY HOODIE MEN 811425**

FIT loose

**FABRIC**  
 MAIN FABRIC 60% cotton 40% polyester french terry

**PRODUCT FEATURES**  
 hood with draw cord adjustment  
 lined hood  
 inside out insert on shoulder & sleeves  
 rib cuff at bottom and sleeve opening  
 print on front panel  
 kangaroo pocket

	S	M	L	XL	XXL	3XL
<input checked="" type="radio"/> NV						
<input checked="" type="radio"/> TE						



NV



back view



TE

**RALLY CREWNECK MEN 811415**

FIT loose

**FABRIC**  
 MAIN FABRIC 60% cotton 40% polyester french terry

**PRODUCT FEATURES**  
 rib crew neck collar  
 inside out insert on shoulder  
 rib cuff at bottom and sleeve hem  
 print on front panel

	S	M	L	XL	XXL	3XL
<input checked="" type="radio"/> LL						
<input checked="" type="radio"/> TE						



LL



back view



TE

**BREAKER JACKET MEN 811035**

FIT regular

**FABRIC**  
 MAIN FABRIC 100% polyester waffel pique

**PRODUCT FEATURES**  
 stand up collar  
 1-way SAB® zipper in centre front  
 welt pocket  
 main fabric cuff at bottom and sleeve opening  
 matching perfect to 811045 BREAKER Pants Men

	S	M	L	XL	XXL	3XL
<input type="radio"/> WH						
<input checked="" type="radio"/> NV						
<input checked="" type="radio"/> TE						



WH



back view



NV



TE

**BREAKER PANTS MEN 811045**

FIT regular

FABRIC  
 MAIN FABRIC 100% polyester woven  
 2ND FABRIC 100% polyester waffel pique

PRODUCT FEATURES  
 elastic waistband with draw cord adjustment  
 slip in pocket  
 pique insert at side  
 bottom hem side opening with SAB® zipper  
 matching perfect to 811035 BREAKER Jacket Men

	S	M	L	XL	XXL	3XL
● NV						
● TE						



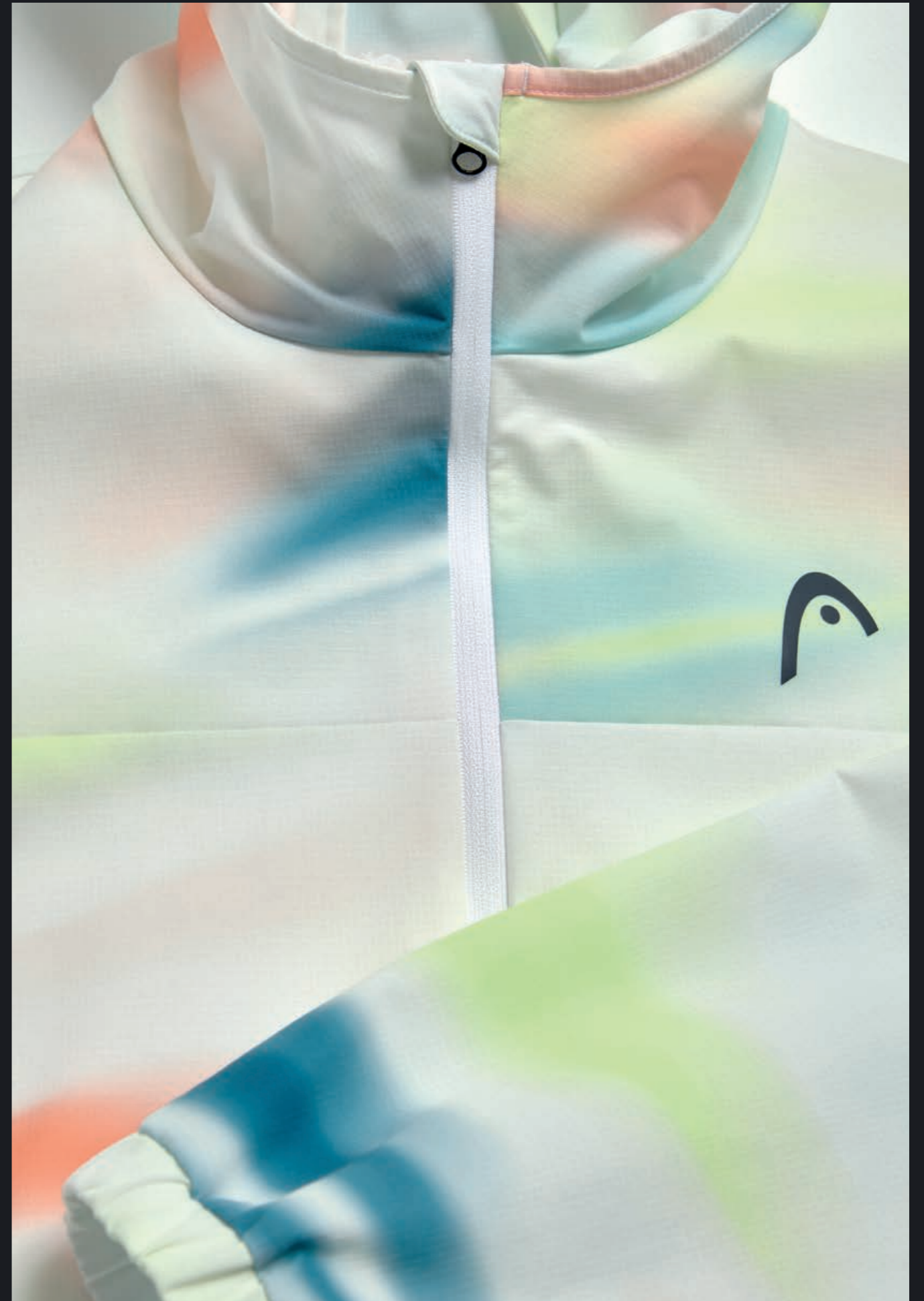
NV



back view



TE





PRODUCT  
OVERVIEW  
JUNIOR

816335	TIE-BREAK T-Shirt Girls	Page 62
816225	SPIRIT Tank Top Girls	Page 62
816275	SPIRIT Dress Girls	Page 63
816215	SLICE T-Shirt Boys	Page 63
816255	SLICE II T-Shirt Boys	Page 64
816235	TOPSPIN T-Shirt Boys	Page 64
816245	TOPSPIN Hoodie Boys	Page 65
816345	Rainbow T-Shirt Junior	Page 65
816405	VISION T-Shirt Junior	Page 66
816903	TENNIS Dress Girls	Page 66
816913	TENNIS Tank Top Girls	Page 67
816923	TENNIS Skirt Girls	Page 67
816943	TENNIS T-Shirt Boys	Page 68
816933	TENNIS Shorts Junior	Page 68

VISION

**TIE-BREAK T-SHIRT GIRLS 816335**

FIT regular

**FABRIC**  
 MAIN FABRIC 100% polyester interlock with wicking  
 2ND FABRIC 100% polyester jacquard double knit with wicking

**PRODUCT FEATURES**  
 round neckline  
 mesh back for enhanced breathability  
 sublimated print on front

	128	140	152	164	176
XWZI					
XWCE					



XWZI



back view



side view



XWCE

**SPIRIT TANK TOP GIRLS 816225**

FIT loose

**FABRIC**  
 MAIN FABRIC 100% polyester interlock with wicking  
 2ND FABRIC 100% polyester jacquard double knit with wicking

**PRODUCT FEATURES**  
 contrast mesh insert on side for enhanced breathability  
 upper chest on front and back with double layer  
 two slits on front

	128	140	152	164	176
CE					
WH					
NV					
CN					
ZI					



CE



back view



side view



WH



ZI



CN



NV

**SPIRIT DRESS GIRLS 816275**

FIT loose

**FABRIC**  
 MAIN FABRIC 100% polyester interlock with wicking  
 2ND FABRIC 100% polyester jacquard double knit with wicking  
 3RD FABRIC 85% polyester 15% elastane(spandex) single jersey with wicking

**PRODUCT FEATURES**  
 contrast mesh insert on side for enhanced breathability  
 upper chest on front and back with double layer  
 two slits on front  
 separate inner pants

	128	140	152	164	176
WH					
NV					
CE					
ZI					



WH



back view



side view



NV



ZI



CE

**SLICE T-SHIRT BOYS 816215**

FIT regular

**FABRIC**  
 MAIN FABRIC 100% polyester interlock with wicking  
 2ND FABRIC 100% polyester jacquard double knit with wicking

**PRODUCT FEATURES**  
 round neckline  
 mesh side insert for enhanced breathability  
 block color design

	128	140	152	164	176
LL					
CN					
TE					
NV					
WH					



LL



back view



side view



CN



WH



NV



TE



**SLICE II T-SHIRT BOYS 816255**

FIT regular

**FABRIC**  
 MAIN FABRIC 100% polyester interlock with wicking



**PRODUCT FEATURES**  
 round neckline

	128	140	152	164	176
● TE					
● CN					
● LL					



TE



back view



CN



LL

**TOPSPIN HOODIE BOYS 816245**

FIT regular

**FABRIC**  
 MAIN FABRIC 100% polyester micro-polyester twill with wicking



**PRODUCT FEATURES**  
 half front SAB® zipper with chin protection  
 two front pockets  
 contrast print on front  
 elasticated bottom opening

	128	140	152	164	176
● LLTE					
● NVLL					



LLTE



back view



NVLL

**TOPSPIN T-SHIRT BOYS 816235**

FIT regular

**FABRIC**  
 MAIN FABRIC 100% polyester interlock with wicking



**PRODUCT FEATURES**  
 v-neckline  
 sublimated print on front

	128	140	152	164	176
● XVNV					
● XVCN					
● XVLL					
● GIXP					



XVNV



back view



XVCN



XVLL



GIXP

**RAINBOW T-SHIRT JUNIOR 816345**

FIT regular

**FABRIC**  
 MAIN FABRIC 57% cotton 38% polyester 5% elastane(spandex) single jersey with wicking



**PRODUCT FEATURES**  
 rib crew neck collar  
 technical mix of polyester and cotton for increased moisture absorbing properties  
 print on front panel  
 WISHBONE flag label at left sleeve

	128	140	152	164	176
● NV					
● CN					
● CE					
● TE					



NV



back view



CN



TE

**VISION T-SHIRT JUNIOR 816405**

FIT regular

**FABRIC**  
 MAIN FABRIC 57% cotton 38% polyester 5% elastane(spandex) single jersey with wicking



**PRODUCT FEATURES**  
 rib crew neck collar  
 technical mix of polyester and cotton for increased moisture absorbing properties  
 print on front panel  
 WISHBONE flag label at left sleeve

	128	140	152	164	176
WHLL					
WHCN					



WHLL



back view



WHCN

**TENNIS TANK TOP GIRLS 816913**

FIT regular

**FABRIC**  
 MAIN FABRIC 57% cotton 38% polyester 5% elastane(spandex) single jersey with wicking



**PRODUCT FEATURES**  
 round neckline  
 ruffel on sleeve opening  
 technical mix of polyester and cotton for increased moisture absorbing properties  
 print on front panel

	104	110	116	122
MU				
LN				



MU



back view



LN

**TENNIS DRESS GIRLS 816903**

FIT regular

**FABRIC**  
 MAIN FABRIC 100% cotton single jersey  
 2ND FABRIC 92% polyester 8% elastane(spandex) mesh



**PRODUCT FEATURES**  
 round neckline  
 all over print on torso  
 separate inner pants

	104	110	116	122
LN				
MU				



LN



back view



MU

**TENNIS SKIRT GIRLS 816923**

FIT regular

**FABRIC**  
 MAIN FABRIC 57% cotton 38% polyester 5% elastane(spandex) single jersey with wicking



**PRODUCT FEATURES**  
 high waistband with elastic inside  
 asymmetric design on front  
 integrated inner pants  
 ruffels on hem opening  
 technical mix of polyester and cotton for increased moisture absorbing properties

	104	110	116	122
MU				
LN				



MU



back view



LN

**TENNIS T-SHIRT BOYS 816943**

FIT regular

**FABRIC**  
 MAIN FABRIC 57% cotton 38% polyester 5% elastane(spandex) single jersey with wicking

M  
 MOISTURE  
 TRANSFER  
 MICROFIBRE

**PRODUCT FEATURES**  
 rib crew neck collar  
 technical mix of polyester and cotton for increased moisture absorbing properties  
 print on front panel

	104	110	116	122
● TQ				
● NV				



TQ



back view



NV

**TENNIS SHORTS JUNIOR 816933**

FIT regular

**FABRIC**  
 MAIN FABRIC 57% cotton 38% polyester 5% elastane(spandex) single jersey with wicking

M  
 MOISTURE  
 TRANSFER  
 MICROFIBRE

**PRODUCT FEATURES**  
 elasticated waistband with draw cord adjustment  
 slip in pockets  
 patch pocket on back  
 contrast binding  
 technical mix of polyester and cotton for increased moisture absorbing properties

	104	110	116	122
● NV				
● TQ				



NV



back view



TQ





PRODUCT  
OVERVIEW  
WOMEN

814715	CLUB 25 TECH Polo Shirt Women	Page 72
814725	CLUB 25 TECH T-Shirt Women	Page 72
814735	CLUB 25 Tech Tank Top Women	Page 73
814765	CLUB 25 TECH Hoodie Women	Page 73
814755	CLUB 25 Jacket Women	Page 74
814745	CLUB 25 Dress Women	Page 74
814399	CLUB Basic Skort Women	Page 75
814539	CLUB Basic Skort Long Women	Page 75
814409	CLUB 3/4 Tights Skort Women	Page 76
814379	CLUB Shorts Women	Page 76
814329	CLUB Pants Women	Page 77
814845	CLUB ORIGINAL T-Shirt Women	Page 77
814815	CLUB ORIGINAL Hoodie FZ Women	Page 78
814825	CLUB ORIGINAL Hoodie Women	Page 78
814835	CLUB ORIGINAL Shorts Women	Page 79
814855	CLUB ORIGINAL Pants Women	Page 79
814695	CLUB Lightweight Vest Women	Page 80
814705	CLUB COACH Jacket Women	Page 80
814805	CLUB KINETIC Jacket Women	Page 81

CLUB

**CLUB 25 TECH POLO SHIRT WOMEN 814715**

FIT regular

**FABRIC**  
 MAIN FABRIC 100% polyester interlock with wicking  
 2ND FABRIC 100% polyester closed mesh

**PRODUCT FEATURES**  
 flatknit rib collar  
 3-buttoned placket with HEAD branded buttons  
 contrast insert on front  
 closed mesh on side and sleeve for enhanced breathability

	XS	S	M	L	XL	XXL	3XL
<input checked="" type="radio"/> NV							
<input type="radio"/> WH							



NV



back view



WH

**CLUB 25 TECH T-SHIRT WOMEN 814725**

FIT regular

**FABRIC**  
 MAIN FABRIC 100% polyester interlock with wicking  
 2ND FABRIC 100% polyester closed mesh

**PRODUCT FEATURES**  
 round feminine neckline  
 contrast insert on front  
 closed mesh on side and sleeve for enhanced breathability

	XS	S	M	L	XL	XXL	3XL
<input checked="" type="radio"/> NVWH							
<input type="radio"/> WH							
<input checked="" type="radio"/> NV							
<input checked="" type="radio"/> RDWH							
<input checked="" type="radio"/> RDWH							



NVWH



back view



WH NOS



NV NOS



RDWH



ROWH

**CLUB 25 TECH TANK TOP WOMEN 814735**

FIT regular

**FABRIC**  
 MAIN FABRIC 100% polyester interlock with wicking  
 2ND FABRIC 100% polyester closed mesh

**PRODUCT FEATURES**  
 round feminine neckline  
 racer back  
 contrast insert on front  
 closed mesh on side for enhanced breathability

	XS	S	M	L	XL	XXL	3XL
<input checked="" type="radio"/> ROWH							
<input checked="" type="radio"/> RDWH							
<input type="radio"/> WH							
<input checked="" type="radio"/> NVWH							
<input checked="" type="radio"/> NV							



ROWH



back view



side view



RDWH



NV NOS



NVWH



WH NOS

**CLUB 25 TECH HOODIE WOMEN 814765**

FIT regular

**FABRIC**  
 MAIN FABRIC 100% polyester twill with wicking  
**LINING**

**PRODUCT FEATURES**  
 fixed hood  
 SAB® half front zipper  
 elastic binding at bottom hem, sleeve hem and hood  
 contrast insert on front

	XS	S	M	L	XL	XXL	3XL
<input checked="" type="radio"/> RDWH							
<input checked="" type="radio"/> ROWH							
<input checked="" type="radio"/> NVWH							



RDWH



back view



ROWH



NVWH

**CLUB 25 JACKET WOMEN 814755**

FIT regular

**FABRIC**  
 MAIN FABRIC 100% polyester woven with wicking  
 LINING 100% polyester mesh



**PRODUCT FEATURES**  
 1-way SAB® zipper with chin protection in centre front  
 elastic binding at bottom hem, sleeve hem and collar  
 hand pockets with zipper  
 mesh lining inside body and sleeve  
 contrast insert on front

	XS	S	M	L	XL	XXL	3XL
<input checked="" type="radio"/> NVWH							
<input type="radio"/> WH							
<input checked="" type="radio"/> ROWH							
<input checked="" type="radio"/> RDWH							
<input type="radio"/> NV							



**CLUB 25 DRESS WOMEN 814745**

FIT regular

**FABRIC**  
 MAIN FABRIC 85% polyester 15% elastane(spandex) with wicking  
 2ND FABRIC 100% polyester closed mesh



**PRODUCT FEATURES**  
 round feminine neckline  
 racer back  
 contrast insert on front  
 closed mesh on side for enhanced breathability  
 separate inner pants

	XS	S	M	L	XL	XXL	3XL
<input checked="" type="radio"/> RDWH							
<input type="radio"/> WH							
<input checked="" type="radio"/> NVWH							
<input type="radio"/> NV							
<input checked="" type="radio"/> ROWH							



**CLUB BASIC SKORT WOMEN 814399**

FIT regular

**FABRIC**  
 MAIN FABRIC 92% polyester 8% elastane(spandex) single jersey with wicking



**PRODUCT FEATURES**  
 high waistband with elastic inside  
 side slits  
 integrated inner pants

	XS	S	M	L	XL	XXL	3XL
<input type="radio"/> NV							
<input type="radio"/> BK							
<input type="radio"/> WH							
<input type="radio"/> RD							
<input type="radio"/> AN							



**CLUB BASIC SKORT LONG WOMEN 814539**

FIT regular

**FABRIC**  
 MAIN FABRIC 92% polyester 8% elastane(spandex) single jersey with wicking



**PRODUCT FEATURES**  
 high waistband with elastic inside  
 side slits  
 intergrated inner pants  
 7cm longer than 814399 CLUB Basic Skort Women

	XS	S	M	L	XL	XXL	3XL
<input type="radio"/> WH							
<input type="radio"/> BK							
<input type="radio"/> NV							



**CLUB 3/4 TIGHTS SKORT WOMEN 814409**

FIT regular

**FABRIC**  
 MAIN FABRIC 92% polyester 8% elastane(spandex) single jersey with wicking



**PRODUCT FEATURES**  
 high waistband with elastic inside  
 tennisball pocket at thigh  
 side slits  
 integrated inner pants

	XS	S	M	L	XL	XXL	3XL
● NV							
● BK							
○ WH							



**CLUB SHORTS WOMEN 814379**

FIT regular

**FABRIC**  
 MAIN FABRIC 100% polyester woven with wicking  
 2ND FABRIC 100% polyester mesh  
 LINING 100% polyester mesh



**PRODUCT FEATURES**  
 elasticated waistband with draw cord adjustment  
 draw cord with transparent tip end  
 slip in pockets  
 mesh side inserts for enhanced breathability  
 WH: fully lined

	XS	S	M	L	XL	XXL	3XL
● RO							
● AN							
● NV							
○ WH							
● BK							



**CLUB PANTS WOMEN 814329**

FIT regular

**FABRIC**  
 MAIN FABRIC 100% polyester woven with wicking  
 LINING 100% polyester mesh



**PRODUCT FEATURES**  
 elasticated waistband with draw cord adjustment  
 draw cord with transparent tip end  
 slip in pockets  
 leg hem zipper  
 WH: mesh inner pant

	XS	S	M	L	XL	XXL	3XL
● RD							
● AN							
● RO							
● NV							
○ WH							



**CLUB ORIGINAL T-SHIRT WOMEN 814845**

FIT regular

**FABRIC**  
 MAIN FABRIC 57% cotton 38% polyester 5% elastane(spandex) single jersey with wicking



**PRODUCT FEATURES**  
 rib crew neck collar  
 technical mix of polyester and cotton for increased moisture absorbing properties  
 HEAD print on front panel

	XS	S	M	L	XL	XXL	3XL
● BK							
○ WH							
● NV							
● RO							
● RD							



**CLUB ORIGINAL HOODIE FZ WOMEN 814815**

FIT regular

**FABRIC**  
 MAIN FABRIC 60% cotton 40% polyester french terry  
 2ND FABRIC 57% cotton 38% polyester 5% elastane(spandex) single jersey with wicking

**PRODUCT FEATURES**  
 1-way SAB® zipper centre front  
 lined hood  
 hood with draw cord adjustment  
 rib at bottom and sleeve hem  
 slip in pockets  
 HEAD print on front panel

	XS	S	M	L	XL	XXL	3XL
● NV							
○ GM							



back view



GM

**CLUB ORIGINAL SHORTS WOMEN 814835**

FIT regular

**FABRIC**  
 MAIN FABRIC 60% cotton 40% polyester french terry

**PRODUCT FEATURES**  
 rib waistband with elastic inside  
 waistband with draw cord adjustment  
 slip in pockets

	XS	S	M	L	XL	XXL	3XL
● BK							
● NV							
○ GM							



back view



NV



GM

**CLUB ORIGINAL HOODIE WOMEN 814825**

FIT regular

**FABRIC**  
 MAIN FABRIC 60% cotton 40% polyester french terry  
 2ND FABRIC 57% cotton 38% polyester 5% elastane(spandex) single jersey with wicking

**PRODUCT FEATURES**  
 lined hood  
 hood with draw cord adjustment  
 rib at bottom and sleeve hem  
 kangaroo pocket  
 HEAD print on front panel

	XS	S	M	L	XL	XXL	3XL
○ GM							
● NV							
● RO							
● RD							



back view



NV NOS



RO



RD

**CLUB ORIGINAL PANTS WOMEN 814855**

FIT regular

**FABRIC**  
 MAIN FABRIC 60% cotton 40% polyester french terry

**PRODUCT FEATURES**  
 elasticated waistband with draw cord adjustment  
 slip in pockets  
 rib cuff at leg opening  
 HEAD print on left leg

	XS	S	M	L	XL	XXL	3XL
● NV							
○ GM							
● BK							



back view



GM



BK



**CLUB LIGHTWEIGHT VEST WOMEN 814695**

FIT regular

**FABRIC**  
 MAIN FABRIC 100% polyester woven

**PRODUCT FEATURES**  
 1-way SAB® zipper with chin protection in centre front  
 stand up collar  
 quilting on front and back  
 slip in pockets  
 elastic binding at bottom hem and armhole

	XS	S	M	L	XL	XXL	3XL
● NV							
● BK							



NV NOS



back view



BK

**CLUB KINETIC JACKET WOMEN 814805**

FIT regular

**FABRIC**  
 MAIN FABRIC 100% polyester taffeta with DWR finish  
 INSULATION 100% polyester  
 LINING 100% polyester taffeta

**PRODUCT FEATURES**  
 lightweight outer shell and lining fabric  
 padded stand up collar with integrated stow-away hood  
 centre front and hand pockets with SAB® zippers  
 elastic binding on sleeve cuffs and hem

	XS	S	M	L	XL	XXL	3XL
● BK							
● NV							



BK



back view



NV NOS

**CLUB COACH JACKET WOMEN 814705**

FIT regular

**FABRIC**  
 MAIN FABRIC 100% polyester woven  
 LINING 100% polyester mesh



**PRODUCT FEATURES**  
 water repellent SAB® zipper at centre front, handpockets and chest pocket  
 media SAB® zip pocket inside  
 stand up collar for stowable hood  
 fixed hood with visor  
 fully seam taped  
 elasticated sleeve hem  
 adjustable hem with draw cord

	XS	S	M	L	XL	XXL	3XL
● BK							
● NV							



BK



back view



NV



PRODUCT  
OVERVIEW  
MEN

811715	CLUB 25 TECH Polo Shirt Men	Page 84
811725	CLUB 25 TECH T-Shirt Men	Page 84
818811	SIMPLE T-Shirt Men	Page 85
811735	CLUB 25 TECH Hoodie Men	Page 85
811745	CLUB 25 Jacket Men	Page 86
811379	CLUB Shorts Men	Page 86
811389	CLUB Bermudas Men	Page 87
811329	CLUB Pants Men	Page 87
811855	CLUB ORIGINAL T-Shirt Men	Page 88
811815	CLUB ORIGINAL Hoodie FZ Men	Page 88
811825	CLUB ORIGINAL Hoodie Men	Page 89
811835	CLUB ORIGINAL Bermudas Men	Page 89
811845	CLUB ORIGINAL Pants Men	Page 90
811785	CLUB Lightweight Vest Men	Page 90
811795	CLUB COACH Jacket Men	Page 91
811805	CLUB KINETIC Jacket Men	Page 91

CLUB

**CLUB 25 TECH POLO SHIRT MEN 811715**

FIT regular

**FABRIC**  
 MAIN FABRIC 100% polyester interlock with wicking  
 2ND FABRIC 100% polyester closed mesh

**PRODUCT FEATURES**  
 flatknit rib collar  
 3-buttoned placket with HEAD branded buttons  
 contrast insert on front  
 closed mesh on side and sleeve for enhanced breathability

	S	M	L	XL	XXL	3XL
● NV						
○ WH						

M  
MOISTURE  
TRANSFER  
M  
MICROFIBRE



NV NOS



back view



WH NOS

**SIMPLE T-SHIRT MEN 818811**

FIT regular

**FABRIC**  
 MAIN FABRIC 100% polyester interlock

**PRODUCT FEATURES**  
 round neckline

	S	M	L	XL	XXL	3XL
● NV						
○ WH						



NV



back view



WH

**CLUB 25 TECH T-SHIRT MEN 811725**

FIT regular

**FABRIC**  
 MAIN FABRIC 100% polyester interlock with wicking  
 2ND FABRIC 100% polyester closed mesh

**PRODUCT FEATURES**  
 round neckline  
 contrast insert on front  
 closed mesh on side and sleeve for enhanced breathability

	S	M	L	XL	XXL	3XL
● NVWH						
○ WH						
● NV						
● ROWH						
● RDWH						

M  
MOISTURE  
TRANSFER  
M  
MICROFIBRE



NVWH



back view



WH NOS



NV NOS



RDWH



ROWH

**CLUB 25 TECH HOODIE MEN 811735**

FIT regular

**FABRIC**  
 MAIN FABRIC 100% polyester twill with wicking

**PRODUCT FEATURES**  
 fixed hood  
 SAB® half front zipper  
 elastic binding at bottom hem, sleeve hem and hood  
 contrast insert on front

	S	M	L	XL	XXL	3XL
● RDWH						
● ROWH						
● NVWH						

M  
MOISTURE  
TRANSFER  
M  
MICROFIBRE



RDWH



back view



ROWH



NVWH

**CLUB 25 JACKET MEN 811745**

FIT regular

**FABRIC**  
 MAIN FABRIC 100% polyester woven with wicking  
 LINING 100% polyester mesh

**PRODUCT FEATURES**  
 1-way SAB® zipper with chin protection in centre front  
 elastic binding at bottom hem, sleeve hem and collar  
 hand pockets with SAB® zipper  
 mesh lining inside body and sleeve  
 contrast insert on front

	S	M	L	XL	XXL	3XL
● ROWH						
● RDWH						
○ WH						
● NVWH						
● NV						



ROWH



back view



RDWH



WH



NV



NVWH

**CLUB SHORTS MEN 811379**

FIT regular

**FABRIC**  
 MAIN FABRIC 100% polyester woven with wicking  
 2ND FABRIC 100% polyester mesh  
 LINING 100% polyester mesh

**PRODUCT FEATURES**  
 elasticated waistband with draw cord adjustment  
 draw cord with transparent tip end  
 slip in pockets  
 mesh gusset  
 WH: fully lined

	S	M	L	XL	XXL	3XL
● NV						
● BK						
● RO						
● RD						
● AN						
○ WH						



NV NOS



back view



BK



RO



WH NOS



AN



RD

**CLUB BERMUDAS MEN 811389**

FIT regular

**FABRIC**  
 MAIN FABRIC 100% polyester woven with wicking  
 2ND FABRIC 100% polyester mesh  
 LINING 100% polyester mesh

**PRODUCT FEATURES**  
 elasticated waistband with draw cord adjustment  
 draw cord with transparent tip end  
 slip in pockets  
 mesh gusset  
 WH: fully lined

	S	M	L	XL	XXL	3XL
● NV						
○ WH						
● BK						
● RO						
● RD						
● AN						



NV



back view



WH



BK



AN



RD



RO

**CLUB PANTS MEN 811329**

FIT regular

**FABRIC**  
 MAIN FABRIC 100% polyester woven with wicking  
 LINING 100% polyester mesh

**PRODUCT FEATURES**  
 elasticated waistband with draw cord adjustment  
 draw cord with transparent tip end  
 slip in pockets  
 leg hem SAB® zipper  
 WH: mesh inner pant

	S	M	L	XL	XXL	3XL
○ WH						
● NV						
● RO						
● RD						
● AN						



WH



back view



NV



RO



AN



RD

**CLUB ORIGINAL T-SHIRT MEN 811855**

FIT regular

**FABRIC**  
 MAIN FABRIC 57% cotton 38% polyester 5% elastane(spandex) single jersey with wicking



**PRODUCT FEATURES**  
 rib crew neck collar  
 technical mix of polyester and cotton for increased moisture absorbing properties  
 HEAD print on front panel

	S	M	L	XL	XXL	3XL
● RO						
● RD						
● NV						
○ WH						
● BK						



RO



back view



RD



NV NOS



BK



WH NOS

**CLUB ORIGINAL HOODIE FZ MEN 811815**

FIT regular

**FABRIC**  
 MAIN FABRIC 60% cotton 40% polyester french terry  
 2ND FABRIC 57% cotton 38% polyester 5% elastane(spandex) single jersey with wicking

**PRODUCT FEATURES**  
 1-way SAB® zipper centre front  
 lined hood  
 hood with draw cord adjustment  
 rib at bottom and sleeve hem  
 slip in pockets  
 HEAD print on front panel

	S	M	L	XL	XXL	3XL
○ GM						
● NV						



GM



back view



NV

**CLUB ORIGINAL HOODIE MEN 811825**

FIT regular

**FABRIC**  
 MAIN FABRIC 60% cotton 40% polyester french terry  
 2ND FABRIC 57% cotton 38% polyester 5% elastane(spandex) single jersey with wicking

**PRODUCT FEATURES**  
 lined hood  
 hood with draw cord adjustment  
 rib at bottom and sleeve hem  
 kangaroo pocket  
 HEAD print on front panel

	S	M	L	XL	XXL	3XL
● NV						
● RO						
● RD						
○ GM						



NV NOS



back view



RO



RD



GM

**CLUB ORIGINAL BERMUDAS MEN 811835**

FIT regular

**FABRIC**  
 MAIN FABRIC 60% cotton 40% polyester french terry

**PRODUCT FEATURES**  
 elasticated waistband with draw cord adjustment  
 slip in pockets

	S	M	L	XL	XXL	3XL
● BK						
● NV						
○ GM						



BK



back view



NV



GM

**CLUB ORIGINAL PANTS MEN 811845**

FIT regular

**FABRIC**  
 MAIN FABRIC 60% cotton 40% polyester french terry

**PRODUCT FEATURES**  
 elasticated waistband with draw cord adjustment  
 slip in pockets  
 rib cuff at leg opening  
 HEAD print on left leg

	S	M	L	XL	XXL	3XL
● BK						
● NV						
● GM						



BK



back view



NV NOS



GM

**CLUB LIGHTWEIGHT VEST MEN 811785**

FIT regular

**FABRIC**  
 MAIN FABRIC 100% polyester woven

**PRODUCT FEATURES**  
 1-way SAB® zipper with chin protection in centre front  
 stand up collar  
 quilting on front and back  
 slip in pockets  
 elastic binding at bottom hem and armhole

	S	M	L	XL	XXL	3XL
● NV						
● BK						



NV NOS



back view



BK

**CLUB COACH JACKET MEN 811795**

FIT regular

**FABRIC**  
 MAIN FABRIC 100% polyester woven  
 LINING 100% polyester mesh

**PRODUCT FEATURES**  
 water repellent SAB® zipper at centre front, handpockets and chest pocket  
 media SAB® zip pocket inside  
 stand up collar for stowable hood  
 fixed hood with visor  
 fully seam taped  
 elasticated sleeve hem  
 adjustable hem with draw cord

	S	M	L	XL	XXL	3XL
● BK						
● NV						



BK



back view



NV

**CLUB KINETIC JACKET MEN 811805**

FIT regular

**FABRIC**  
 MAIN FABRIC 100% polyester taffeta with DWR finish  
 INSULATION 100% polyester  
 LINING 100% polyester taffeta

**PRODUCT FEATURES**  
 lightweight outer shell and lining fabric  
 padded stand up collar with integrated stow-away hood  
 centre front and hand pockets with SAB® zippers  
 elastic binding on sleeve cuffs and hem

	S	M	L	XL	XXL	3XL
● BK						
● NV						



BK



back view



NV NOS

PRODUCT OVERVIEW JUNIOR

816725	CLUB 25 Tech T-Shirt Girls	Page 93
816735	CLUB 25 Tank Top Girls	Page 93
816459	CLUB Basic Skort Girls	Page 94
816835	CLUB ORIGINAL Shorts Girls	Page 94
816765	CLUB 25 Tech T-Shirt Boys	Page 95
816745	CLUB 25 Jacket Junior	Page 95
816795	CLUB ORIGINAL Bermudas Boys	Page 96
816349	CLUB Bermudas Junior	Page 96
816319	CLUB Pants Junior	Page 97
816785	CLUB ORIGINAL T-Shirt Junior	Page 97
816825	CLUB ORIGINAL Hoodie Junior	Page 98
816805	CLUB ORIGINAL Pants Junior	Page 98

CLUB

CLUB JUNIOR

CLUB 25 TECH T-SHIRT GIRLS 816725

FIT regular

FABRIC

MAIN FABRIC 100% polyester interlock with wicking

2ND FABRIC 100% polyester closed mesh

PRODUCT FEATURES

round neckline

contrast insert on front

closed mesh on side and sleeve for enhanced breathability

	128	140	152	164	176
<input checked="" type="radio"/> NVWH					
<input type="radio"/> WH					
<input type="radio"/> NV					
<input checked="" type="radio"/> ROWH					
<input checked="" type="radio"/> RDWH					



NVWH



back view



WH



NV



RDWH



ROWH

CLUB 25 TANK TOP GIRLS 816735

FIT regular

FABRIC

MAIN FABRIC 100% polyester interlock with wicking

2ND FABRIC 100% polyester closed mesh

PRODUCT FEATURES

round neckline

racer back

contrast insert on front

closed mesh on side for enhanced breathability

	128	140	152	164	176
<input checked="" type="radio"/> ROWH					
<input checked="" type="radio"/> RDWH					
<input type="radio"/> WH					
<input checked="" type="radio"/> NVWH					
<input type="radio"/> NV					



ROWH



back view



side view



RDWH



NV NOS



NV NOS



NVWH

PERFORMANCE

VISION

CLUB

OFF COURT

ACCESSORIES

FOOTWEAR

SIZING

**CLUB BASIC SKORT GIRLS 816459**

FIT regular

**FABRIC**  
 MAIN FABRIC 92% polyester 8% elastane(spandex) single jersey with wicking

**PRODUCT FEATURES**  
 high waistband with elastic inside  
 side slits  
 integrated inner pants

	128	140	152	164	176
<input checked="" type="radio"/> NV					
<input checked="" type="radio"/> BK					
<input type="radio"/> WH					
<input checked="" type="radio"/> AN					



NV NOS



back view



BK



WH NOS



AN

**CLUB ORIGINAL SHORTS GIRLS 816835**

FIT regular

**FABRIC**  
 MAIN FABRIC 60% cotton 40% polyester french terry

**PRODUCT FEATURES**  
 ribbed waistband construction with elastic inside  
 waistband with draw cord adjustment  
 slip in pockets

	128	140	152	164	176
<input type="radio"/> GM					
<input checked="" type="radio"/> NV					
<input checked="" type="radio"/> BK					



GM



back view



NV



BK

**CLUB 25 TECH T-SHIRT BOYS 816765**

FIT regular

**FABRIC**  
 MAIN FABRIC 100% polyester interlock with wicking  
 2ND FABRIC 100% polyester closed mesh

**PRODUCT FEATURES**  
 round neckline  
 contrast insert on front  
 closed mesh on side and sleeve for enhanced breathability

	128	140	152	164	176
<input checked="" type="radio"/> NVWH					
<input type="radio"/> WH					
<input checked="" type="radio"/> NV					
<input checked="" type="radio"/> ROWH					
<input checked="" type="radio"/> RDWH					



NVWH



back view



WH NOS



NV NOS



RDWH



ROWH

**CLUB 25 JACKET JUNIOR 816745**

FIT regular

**FABRIC**  
 MAIN FABRIC 100% polyester 2/2 twill woven with wicking  
 LINING 100% polyester mesh

**PRODUCT FEATURES**  
 1-way SAB® zipper with chin protection in centre front  
 elastic binding at bottom hem, sleeve hem and collar  
 hand pockets with SAB® zipper  
 mesh lining inside body and sleeve  
 contrast insert on front

	128	140	152	164	176
<input checked="" type="radio"/> ROWH					
<input checked="" type="radio"/> RDWH					
<input type="radio"/> WH					
<input checked="" type="radio"/> NVWH					
<input checked="" type="radio"/> NV					



ROWH



back view



RDWH



WH



NV



NVWH



**CLUB ORIGINAL BERMUDAS BOYS 816795**

FIT regular

FABRIC  
 MAIN FABRIC 60% cotton 40% polyester french terry

PRODUCT FEATURES  
 elasticated waistband with draw cord adjustment  
 slip in pockets

	128	140	152	164	176
● BK					
● NV					
● GM					



BK



back view



NV



GM

**CLUB BERMUDAS JUNIOR 816349**

FIT regular

FABRIC  
 MAIN FABRIC 100% polyester woven with wicking  
 2ND FABRIC 100% polyester mesh  
 LINING 100% polyester mesh

PRODUCT FEATURES  
 elasticated waistband with draw cord adjustment  
 slip in pockets  
 mesh gusset  
 WH: fully lined

	128	140	152	164	176
● RO					
● RD					
● AN					
● NV					
○ WH					
● BK					



RO



back view



RD



AN



BK



WH NOS



NV NOS

**CLUB PANTS JUNIOR 816319**

FIT regular

FABRIC  
 MAIN FABRIC 100% polyester woven with wicking  
 LINING 100% polyester mesh

PRODUCT FEATURES  
 elasticated waistband with draw cord adjustment  
 draw cord with transparent tip end  
 slip in pockets  
 leg hem SAB® zipper  
 WH: mesh inner pant

	128	140	152	164	176
○ WH					
● NV					
● RO					
● RD					
● AN					



WH



back view



NV



RO



AN



RD

**CLUB ORIGINAL T-SHIRT JUNIOR 816785**

FIT regular

FABRIC  
 MAIN FABRIC 57% cotton 38% polyester 5% elastane(spandex) single jersey with wicking

PRODUCT FEATURES  
 size split also for toddlers  
 rib crew neck collar  
 technical mix of polyester and cotton for increased moisture absorbing properties  
 HEAD print on front panel

	104	110	116	122	128	140	152	164	176
● RD									
● RO									
● NV									
○ WH									
● BK									



RD



back view



RO



NV NOS



BK



WH NOS





## PRODUCT OVERVIEW WOMEN

814095	PROPLAYER T-Shirt Women	Page 102
814905	MOTION T-Shirt Women	Page 102
814925	MOTION Sweat Pants Women	Page 103
814504	CLASSIC Polo Women	Page 103
814935	CLASSIC Pullover Women	Page 104

# OFF COURT

**PROPLAYER T-SHIRT WOMEN 814095**

FIT loose

**FABRIC**  
MAIN FABRIC 100% cotton interlock

**PRODUCT FEATURES**  
decorative prints  
round neckline  
rib crew neck collar  
WISHBONE flag label at left sleeve

	XS	S	M	L	XL	XXL	3XL
● GI							
● WG							



GI



back view



WG

**MOTION T-SHIRT WOMEN 814905**

FIT loose

**FABRIC**  
MAIN FABRIC 100% cotton interlock

**PRODUCT FEATURES**  
HEAD logo on front panel  
round neckline  
rib crew neck collar  
WISHBONE flag label at left sleeve

	XS	S	M	L	XL	XXL	3XL
● ZI							
● EZ							
● AQ							
● WH							



ZI



back view



EZ



AQ



WH

**MOTION SWEAT PANTS WOMEN 814925**

FIT loose

**FABRIC**  
MAIN FABRIC 100% cotton terry

**PRODUCT FEATURES**  
elasticated waistband with draw cord adjustment  
draw cord with metal tip end and soft rubber coating  
slip in pockets  
rib cuff at leg hem  
WISHBONE flag label at left hem

	XS	S	M	L	XL	XXL	3XL
● ZI							
● TK							
● GI							
● WG							



ZI



back view



TK



GI



WG

**CLASSIC POLO WOMEN 814504**

FIT regular

**FABRIC**  
MAIN FABRIC 100% cotton piqué

**PRODUCT FEATURES**  
flatknit rib polo collar  
5-buttoned placket with HEAD branded buttons  
side slits  
WISHBONE flag label at left hem

	XS	S	M	L	XL	XXL	3XL
● WG							
○ WH							
● NV							
● BK							



WG



back view



WH



NV



BK

**CLASSIC PULLOVER WOMEN 814935**

FIT regular

**FABRIC**

MAIN FABRIC 100% cotton knit

**PRODUCT FEATURES**

v-neck

rib cuffs on sleeve and hem opening

WISHBONE logo embroidery on chest

	XS	S	M	L	XL	XXL	3XL
● NV							
○ WH							



NV



back view



WH





# OFF COURT

## PRODUCT OVERVIEW MEN

811885	PROPLAYER T-Shirt Men	Page 108
811945	MOTION T-Shirt Men	Page 108
811955	MOTION Sweat Pants Men	Page 109
811364	CLASSIC Polo Men	Page 109
811965	CLASSIC Pullover Men	Page 110

**PROPLAYER T-SHIRT MEN 811885**

FIT regular

**FABRIC**  
MAIN FABRIC 100% cotton interlock

**PRODUCT FEATURES**  
decorative prints  
round neckline  
rib crew neck collar  
WISHBONE flag label at left sleeve

	S	M	L	XL	XXL	3XL
WG						
GI						



WG



back view



GI

**MOTION T-SHIRT MEN 811945**

FIT regular

**FABRIC**  
MAIN FABRIC 100% cotton interlock

**PRODUCT FEATURES**  
HEAD logo on front panel  
round neckline  
rib crew neck collar  
WISHBONE flag label left sleeve

	S	M	L	XL	XXL	3XL
EZ						
ZI						
TE						
WH						



EZ



back view



ZI



TE



WH

**MOTION SWEAT PANTS MEN 811955**

FIT regular

**FABRIC**  
MAIN FABRIC 100% cotton terry

**PRODUCT FEATURES**  
elasticated waistband with draw cord adjustment  
draw cord with metal tip end and soft rubber coating  
metal eyelets with soft rubber coating  
slip in pockets  
rib cuff at leg hem  
WISHBONE flag label at left hem

	S	M	L	XL	XXL	3XL
SW						
TE						
GI						
WG						



SW



back view



TE



GI



WG

**CLASSIC POLO MEN 811364**

FIT regular

**FABRIC**  
MAIN FABRIC 100% cotton piqué

**PRODUCT FEATURES**  
flatknit rib crew neck collar  
3-buttoned placket with HEAD branded buttons  
side slits  
WISHBONE flag label at left hem

	S	M	L	XL	XXL	3XL
WH						
NV						
BK						
WG						



WH



back view



NV



BK



WG

**CLASSIC PULLOVER MEN 811965**

FIT regular

**FABRIC**

MAIN FABRIC 100% cotton knit

**PRODUCT FEATURES**

v-neck

rib cuffs on sleeve and hem opening

WISHBONE logo embroidery on chest

	S	M	L	XL	XXL	3XL
<input type="radio"/> WH						
<input type="radio"/> NV						



WH



back view



NV







## PRODUCT OVERVIEW UNISEX

811865	PROPLAYER Crewneck Unisex	Page 114
811875	PROPLAYER Sweat Shorts Unisex	Page 114
811905	MOTION Crewneck Print Unisex	Page 115
811915	MOTION Crewneck Unisex	Page 115
811935	MOTION Sweat Shorts Unisex	Page 116

# OFF COURT

**PROPLAYER CREWNECK UNISEX 811865**

FIT loose

**FABRIC**  
MAIN FABRIC 100% cotton terry

**PRODUCT FEATURES**  
rib crew neck collar  
rib cuff at bottom and sleeve hem  
decorative prints  
WISHBONE flag label at left sleeve

	XS	S	M	L	XL	XXL	3XL
WG							
GI							



WG



back view



GI

**MOTION CREWNECK PRINT UNISEX 811905**

FIT loose

**FABRIC**  
MAIN FABRIC 100% cotton terry

**PRODUCT FEATURES**  
rib crew neck collar  
rib cuff at bottom and sleeve hem  
allover print on front panel  
WISHBONE flag label at left sleeve

	XS	S	M	L	XL	XXL	3XL
ZI							



ZI



back view

**PROPLAYER SWEAT SHORTS UNISEX 811875**

FIT loose

**FABRIC**  
MAIN FABRIC 100% cotton terry

**PRODUCT FEATURES**  
elasticated waistband with draw cord adjustment  
draw cord with metal tip end and soft rubber coating  
slip in pockets  
decorative prints  
WISHBONE flag label at left hem

	XS	S	M	L	XL	XXL	3XL
WHGI							
WHWG							



WHGI



back view



WHWG

**MOTION CREWNECK UNISEX 811915**

FIT loose

**FABRIC**  
MAIN FABRIC 100% cotton terry

**PRODUCT FEATURES**  
rib crew neck collar  
rib cuff at bottom and sleeve hem  
HEAD logo embroidery  
WISHBONE flag label at left sleeve

	XS	S	M	L	XL	XXL	3XL
AQ							
TE							
NV							
ZI							
EZ							
SW							
TK							



AQ



back view



TE



NV



TK



SW



EZ



ZI

**MOTION SWEAT SHORTS UNISEX 811935**

FIT loose

**FABRIC**

MAIN FABRIC 100% cotton terry



**PRODUCT FEATURES**

elasticated waistband with draw cord adjustment

draw cord with metal tip end and soft rubber coating

slip in pockets

WISHBONE flag label at left hem

	XS	S	M	L	XL	XXL	3XL
TK							
AQ							
WG							
TE							



TK



back view



AQ



WG



TE



PRODUCT  
OVERVIEW

817005	BANDANA	Page 120
817015	VISION Beanie	Page 120
811509	SOCKS TENNIS 2P STRIPE QUARTER	Page 120
811904	SOCKS TENNIS 3P PERFORMANCE	Page 121
811914	SOCKS TENNIS 3P CLUB	Page 121
811934	SOCKS TENNIS 3P SNEAKER	Page 121
811954	SOCKS TENNIS 1P CREW ATHLETES	Page 122
816131	SOCKS 2P TENNIS Junior	Page 122
287099	Pro Player Bandana	Page 122
287115	Pro Player Cap	Page 123
287135	Pro Player Womens Visor	Page 123
287125	Kids Pro Player Cap	Page 123
287104	Performance Cap	Page 124
287105	Performance Visor	Page 124
287299	Promotion Cap	Page 124
287834	Five Panel Tour Cap	Page 125
287814	Delta Flexfit Cap	Page 125
287154	Bucket Hat	Page 125
287145	Baseball Cap	Page 126
287184	Kids Cap Monster	Page 126
287194	Kids Cap Owl	Page 126
285080	Headband	Page 127
285050	Wristband 2.5"	Page 127
285070	Wristband 5"	Page 127
285864	Wristband striped 2.5	Page 128
285874	Wristband striped 5	Page 128

## ACCESSORIES

**BANDANA 817005**

FIT regular

**FABRIC**  
 MAIN FABRIC 100% polyester interlock with wicking



**PRODUCT FEATURES**  
 suitabel for every head  
 knot at backhead  
 protection against sweat  
 sublimated design  
 print matches perfect to your HEAD outfit



PRT



AQ



SW



WG

	One size
<input checked="" type="radio"/> PRT	
<input type="radio"/> AQ	
<input type="radio"/> SW	
<input type="radio"/> WG	

**VISION BEANIE 817015**

**FABRIC**  
 MAIN FABRIC 100% acryl knit

**PRODUCT FEATURES**  
 WISHBONE flag label  
 engineered Germany



WG



EZ



NV



ZI

	One size
<input type="radio"/> WG	
<input type="radio"/> EZ	
<input type="radio"/> NV	
<input type="radio"/> ZI	

**SOCKS TENNIS 2P STRIPE QUARTER 811509**

**FABRIC**  
 MAIN FABRIC 54% polyester 24% cotton 20% polyamide 2% elastane(spandex) knit

**PRODUCT FEATURES**  
 comfort top  
 technical poly/cotton blend  
 mesh on foot  
 arch support  
 cushioned sole for shock absorption



WH



BKW

	35-38	39-42	43-46
<input type="radio"/> WH			
<input checked="" type="radio"/> BKW			

**SOCKS TENNIS 3P PERFORMANCE 811904**

**FABRIC**  
 MAIN FABRIC 55% polyester 30% cotton 13% polyamide 2% elastane(spandex) knit

**PRODUCT FEATURES**  
 comfort top  
 technical polyester/cotton blend  
 air channel  
 arch support  
 cushioned sole for shock absorption



BKW



WH



BK

	35-38	39-42	43-46
<input checked="" type="radio"/> BKW			
<input type="radio"/> WH			
<input checked="" type="radio"/> BK			

**SOCKS TENNIS 3P CLUB 811914**

**FABRIC**  
 MAIN FABRIC 72% cotton 26% polyester 1% polyamide 1% elastane(spandex) knit

**PRODUCT FEATURES**  
 1:1 rib cuff  
 cotton for soft touch and comfort  
 perfectly shaped heel  
 flat toe seam



BK



WHB

	35-38	39-42	43-46
<input checked="" type="radio"/> BK			
<input checked="" type="radio"/> WHB			

**SOCKS TENNIS 3P SNEAKER 811934**

**FABRIC**  
 MAIN FABRIC 73% cotton 23% polyester 2% polyamide 2% elastane(spandex) knit

**PRODUCT FEATURES**  
 1:1 rib cuff  
 cotton for soft touch and comfort  
 perfectly shaped heel  
 flat toe seam



WHB



BK

	35-38	39-42	43-46
<input checked="" type="radio"/> WHB			
<input checked="" type="radio"/> BK			

**SOCKS TENNIS 1P CREW ATHLETES 811954**

**FABRIC**  
**MAIN FABRIC** 46% cotton 46% polyester 7% polyamide 1% elastane(spandex) knit

**PRODUCT FEATURES**  
 technical poly/cotton blend  
 comfort top  
 air channel regulates temperature  
 arch support  
 cushioned sole for shock absorption

	35-38	39-42	43-46
<input type="radio"/> WH			
<input checked="" type="radio"/> BK			



WH



BK

**SOCKS 2P TENNIS JUNIOR 816131**

**FABRIC**  
**MAIN FABRIC** 80% cotton 19% polyamide 1% elastane(spandex) knit

**PRODUCT FEATURES**  
 3:1 rib cuff for perfect fit  
 cotton for soft touch and comfort  
 cushioned sole for shock absorption  
 flat toe seam for comfort

	23-26	27-30	31-34
<input type="radio"/> WH			
<input checked="" type="radio"/> BK			
<input type="radio"/> GR			



WH

**PRO PLAYER BANDANA**

**ART. NO.** 287099 / BK, WH  
 100% polyester  
 Eyelet mesh  
 Adjustable (one size)  
 Sweat absorbent

	One size
<input checked="" type="radio"/> BK	
<input type="radio"/> WH	



BK



WH

**PRO PLAYER CAP**

**ART. NO.** 287115  
 100% Polyester / +UV protection  
 Light construction  
 Perforated fabric  
 Sweatband inside  
 Silicon ICON logo in the max. allowed tournament size  
 Adjustable velcrostrap

	One size
<input type="radio"/> AQ	
<input checked="" type="radio"/> BK	
<input type="radio"/> NV	
<input type="radio"/> WG	
<input type="radio"/> WH	



AQ



BK



NV



WH



WG

**PRO PLAYER WOMENS VISOR**

**ART. NO.** 287135  
 100% polyester  
 Micro fibre lightweight polyester  
 Sweatband inside  
 Adjustable velcrostrap

	One size
<input type="radio"/> AQ	
<input checked="" type="radio"/> NV	
<input type="radio"/> WG	
<input type="radio"/> WH	



NV



WG



AQ



WH

**KIDS PRO PLAYER CAP**

**ART. NO.** 287125  
 100% Polyester /+UV protection  
 Kids size  
 Perforated fabric  
 Sweatband inside  
 Adjustable velcrostrap  
 Silicon ICON logo in the max. allowed tournament size

	One size
<input type="radio"/> AQ	
<input checked="" type="radio"/> BK	
<input type="radio"/> NV	
<input type="radio"/> WG	
<input type="radio"/> WH	



BK



NV



AQ



WG



WH

**PERFORMANCE CAP**

ART. NO. 287104  
 100% Polyester  
 Sonic welded tonal logo  
 Sweatband inside  
 Adjustable velcrostrap

	One size
<input checked="" type="radio"/> BK	
<input checked="" type="radio"/> NV	
<input type="radio"/> WH	



BK



WH



NV

**PERFORMANCE VISOR**

ART. NO. 287105  
 100% Polyester  
 Sonic welded tonal logo  
 Sweatband inside  
 Adjustable velcrostrap

	One size
<input checked="" type="radio"/> BK	
<input checked="" type="radio"/> NV	
<input type="radio"/> WH	



BK



NV



WH

**PROMOTION CAP**

ART. NO. 287299  
 100% Polyester  
 Adjustable velcro strap  
 Bias tape with HEAD print in contrast color  
 HEAD embroidery at front

	One size
<input checked="" type="radio"/> ANGR	
<input checked="" type="radio"/> BK	
<input checked="" type="radio"/> BL	
<input checked="" type="radio"/> NV	
<input checked="" type="radio"/> RD	
<input type="radio"/> WH	



BL



ANGR



BK



NV



WH



RD

**FIVE PANEL TOUR CAP**

ART. NO. 287834  
 5 panel Cap  
 100% Polyester  
 HEAD logo badge on the front  
 Adjustable webbing strap

	One size
<input checked="" type="radio"/> BK	



BK

**DELTA FLEXFIT CAP**

ART. NO. 287814  
 Double twill fabric (96% Polyester, 4% Elastane)  
 Seamless construction  
 HEAD silicon print  
 Perforation on both sides  
 Bias tape sweatband

	One size
<input checked="" type="radio"/> BK	



BK

**BUCKET HAT**

ART. NO. 287154  
 100% Polyester  
 Light construction  
 Adjustable chin strap  
 Perforated fabric (under 100% polyester)

	One size
<input checked="" type="radio"/> BK	
<input checked="" type="radio"/> GR	



BK



GR

**BASEBALL CAP**

ART. NO. 287145

66% Polyester / 34% cotton

6 panel Cap

Eyelet mesh

Snapback

3D embroidery on front

	One size
● NV	
● WG	



**KIDS CAP MONSTER**

ART. NO. 287184

Kids Size

65% Polyester / 35% Cotton

Embroidery design on the front

Adjustable velcro strap

	One size
● BLLI	



**KIDS CAP OWL**

ART. NO. 287194

Kids Size

65% Polyester / 35% Cotton

Embroidery design on the front

Adjustable velcro strap

	One size
TQLB	



**HEADBAND**

ART. NO. 285080

90% Nylon

10% Elasthan

8 colors

	One size
● AN	
● BK	
● BL	
● NV	
● OR	
● RD	
○ WH	
● BN	
● ZI	



**WRISTBAND 2.5"**

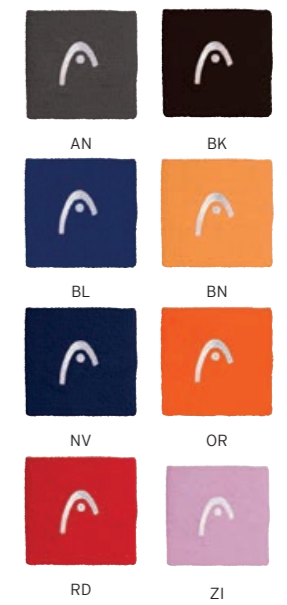
ART. NO. 285050

90% Nylon

10% Elasthan

8 colors

	One size
● AN	
● BK	
● BL	
● BN	
● NV	
● OR	
● RD	
○ WH	
● ZI	



**WRISTBAND 5"**

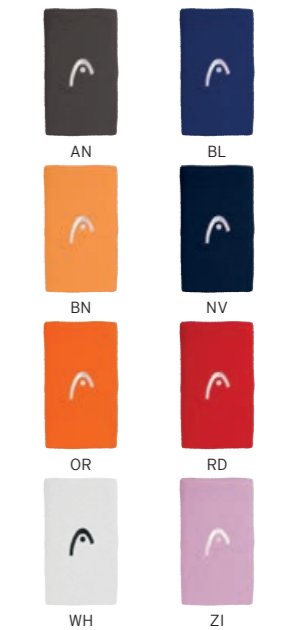
ART. NO. 285070

90% Nylon

10% Elasthan

8 colors

	One size
● AN	
● BK	
● BL	
● BN	
● NV	
● OR	
● RD	
○ WH	
● ZI	





**WRISTBAND STRIPED 2.5**

ART. NO. 285865

90% Nylon

10% Elasthan

8 colors

	One size
<input type="checkbox"/> BKWH	
<input type="checkbox"/> CEWH	
<input type="checkbox"/> LLWH	
<input type="checkbox"/> MX	
<input type="checkbox"/> NVWH	
<input type="checkbox"/> TEWH	
<input type="checkbox"/> ZIWH	



BKWH



CEWH

LLWH



NVWH

TEWH



ZIWH

**WRISTBAND STRIPED 5**

ART. NO. 285875

90% Nylon

10% Elasthan

8 colors

	One size
<input type="checkbox"/> BKWH	
<input type="checkbox"/> CEWH	
<input type="checkbox"/> LLWH	
<input type="checkbox"/> MX	
<input type="checkbox"/> NVWH	
<input type="checkbox"/> TEWH	
<input type="checkbox"/> ZIWH	



BKWH



CEWH

LLWH



NVWH

TEWH



ZIWH

**NOTES**

Area with horizontal lines for notes.



PRODUCT OVERVIEW

Motion Pro Boa Padel	Page 133
Motion Pro Padel	Page 134
Sprint Pro 4.0 Padel	Page 136
Motion Team Padel	Page 138
Motion Padel Junior	Page 139
Sprint Pro 4.0 SF	Page 141
Sprint Pro 4.0	Page 142
Revolt Pro 4.5	Page 144
Revolt Evo 2.0	Page 146
Sprint Evo 3.5 Clay	Page 147
Sprint Team 4.0	Page 148
Revolt Court	Page 149
Revolt Pro 4.5 Junior	Page 150
Sprint Pro 4.0 Junior	Page 151
Sprint Court 4.0 Junior	Page 152
Sprint Velcro 4.0 Kids	Page 153

FOOTWEAR

# FOOTWEAR TECHNOLOGIES

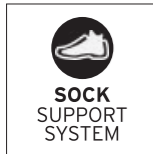
COMFORT



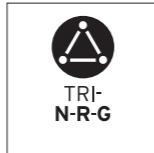
**ORTHOLITE®**  
With its innovative long-term cushioning, and lightweight, highly breathable foam, the OrthoLite® insole enhances comfort on and off the court. The moisture management helps to keep the foot cool, dry and comfortable. On top of that, the insole is machine-washable.



**HEAD COOLING SYSTEM**  
Perforations in the outsole, midsole and sock-liner ensure great ventilation in the bottom of the shoe. Also includes a breathable upper mesh material that provides optimal cooling.



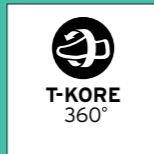
**SOCK SUPPORT SYSTEM**  
Fully integrated elastic sock construction for initial comfort and better support.



**HEAD TRI-NRG**  
HEAD's complete support technology. First, NRG Neutralizes impact in the heel area, then it is Rigid in the midfoot area for excellent torsional support properties and densities in each area of the shoe are key elements in this HEAD footwear technology.



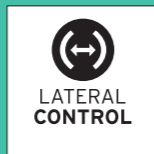
**DYNAFOAM**  
Created with small air cells, this highly responsive, lightweight midsole offers exceptional comfort and lasts longer than conventional EVA midsoles.



**HEAD T-KORE 360°**  
Highlighted by the shoe's design, HEAD T-KORE 360° brings together the performance technologies that ambitious players need. The innovations give your shoe a core strength, with enhanced stability, abrasion resistance and torsional support.



**HEAD LATERAL CONTROL+**  
Reinforced sidewall for outstanding lateral stability which also helps to prevent rolling over during more extreme moves.

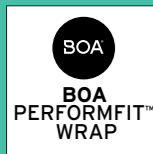


**HEAD LATERAL CONTROL**  
HEAD includes additional lateral stability on all our top performance shoes to help avoid rolling over during extreme slides.



**HEAD HEEL STABILIZER 180°**  
TPU Brace that wraps around the heel for best fit and support.

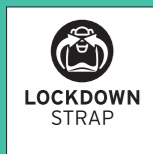
STABILITY



**BOA® PERFORMFIT™ WRAP**  
Delivers micro-adjustable, precision fit engineered to perform in any conditions.



**DELTA STRAP**  
Triangle shaped midfoot straps are integrated into the lacing for best stability and an individual fit.



**HEAD LOCKDOWN STRAP**  
Midfoot straps integrated into the lacing system keep your foot in place.

DURABILITY



**HEAD HYBRASION+**  
A special rubber compound developed for HEAD shoes. Guarantees the best traction for all court surfaces while still providing excellent durability for players who slide a lot.



**HEAD HYBRASION**  
Non-Marking rubber compound that provides good grip and offers great durability on all surfaces.



**SUPERFABRIC®**  
Extremely abrasion resistant and at the same time really flexible upper material.



**HEAD DRIFT DEFENSE**  
In order to have a complete durable shoe, the upper of a shoe needs to be durable as well, especially around the toe and medial forefoot area. HEAD uses an abrasion resistant rubber or a TPU layer in the Drift Defence technology to protect this area during aggressive toe drags.

## MOTION PRO BOA PADEL



Developed with HEAD's pro players, the MOTION PRO BOA PADEL is the first padel shoe with Dual BOA® Fit System, which delivers micro-adjustable precision fit.

### UPPER

BOA® Fit System  
Lightweight, breathable mesh  
Sock construction  
Internal TPU heel counter

### MIDSOLE

Higher toe-spring  
One EVA density - DynaFoam  
Ventilated 3D-anti torsion shank



### MEN/WOMEN



### PADEL COURT



273624 / WHBK



273625 / BKWH

PERFORMANCE

VISION

CLUB

OFF COURT

ACCESSORIES

FOOTWEAR

SIZING

FOOTWEAR

MOTION PRO PADEL



Developed with our pro players, this is HEAD's first shoe engineered specifically for padel, offering 360-degree movement and high performance with modern comfort, stability and breathability.

UPPER

- Lightweight, breathable mesh
- Sock construction
- Lock-down lacing strap
- Internal TPU heel counter

MIDSOLE

- Higher toe-spring
- One EVA density - DynaFoam
- Ventilated 3D-anti torsion shank



FOOTWEAR



MEN



PADEL COURT



273635 / LINV



273645 / WHBK

WOMEN



PADEL COURT



274635 / WHLA



274645 / WHCO

PERFORMANCE

VISION

CLUB

OFF COURT

ACCESSORIES

FOOTWEAR

SIZING

FOOTWEAR

**SPRINT PRO 4.0 PADEL**



Lightweight performance meets ultra-modern, breathable comfort in the SPRINT PRO 4.0 PADEL. Designed for attacking tournament players looking to move fast, the shoe has been upgraded with a new mesh. The redesigned padel outsole developed together with MONDO and an improved midsole foam come along with a faster, sleeker look.

**UPPER**

- Lightweight, breathable mesh
- Half-Sock construction
- Triangle lacing strap
- TPU heel counter

**MIDSOLE**

- Low-to-the-ground
- Minimal heel-to-toe offset
- Three EVA densities
- Ventilated 3D-anti torsion shank



**MEN**



**PADEL COURT**



273655 / NVLI



273665 / WHBK

FOOTWEAR



**WOMEN**



**PADEL COURT**



274655 / CWCO



274665 / WHLN

PERFORMANCE

VISION

CLUB

OFF COURT

ACCESSORIES

FOOTWEAR

SIZING

## MOTION TEAM PADEL



Specifically designed for padel, the MOTION TEAM PADEL is a member of the HEAD padel footwear family offering 360-degree grip and outstanding comfort.

### UPPER

Breathable and lightweight mesh  
Comfortable lining materials  
Toe and medial protection

### MIDSOLE

Higher toe-spring  
Comfortable EVA midsole  
3D-anti torsion shank

### MEN



### PADEL COURT



273685 / NVLI



273695 / WHBK

### WOMEN



### PADEL COURT



274685 / WHLA



274695 / WHCO

## MOTION PADEL JUNIOR



Perfect for ambitious young padel players, the MOTION JUNIOR PADEL is a member of the HEAD padel footwear family offering 360-degree grip and outstanding comfort.

### UPPER

Breathable and lightweight mesh  
Comfortable lining materials  
Toe and medial protection

### MIDSOLE

Comfortable EVA midsole  
Lightweight and responsive

### JUNIOR



### PADEL COURT



275605 / LINV



275615 / WHBK



## SPRINT PRO 4.0 SF



Made with the radical SuperFabric® material, the SPRINT PRO 4.0 SF for attacking tournament players mixes lightweight performance with extraordinary durability. Upgraded with a new mesh, a new all-court & clay outsole patterns and a new midsole foam, along with a faster, sleeker look.

### UPPER

High abrasion resistant SuperFabric vamp material  
 Sock construction  
 Triangle lacing strap  
 TPU heel counter

### MIDSOLE

Low-to-the-ground  
 Minimal heel-to-toe offset  
 Three EVA densities  
 Ventilated 3D-anti torsion shank

### MEN



### ALLCOURT



273105 / BKWH

### CLAY COURT



273115 / BKWH



FOOTWEAR

**SPRINT PRO 4.0**



Lightweight performance meets ultra-modern, breathable comfort in the SPRINT PRO 4.0. Designed for attacking tournament players looking to move fast, the shoe has been upgraded with a new mesh, a new all-court and clay outsole pattern and a new midsole foam, along with a faster, sleeker look.

**UPPER**

- Lightweight, breathable mesh
- Half-Sock construction
- Triangle lacing strap
- TPU heel counter

**MIDSOLE**

- Low-to-the-ground
- Minimal heel-to-toe offset
- Three EVA densities
- Ventilated 3D-anti torsion shank



**MEN**

**ALLCOURT**

**CLAY COURT**



273125 / DBRD



273135 / DBRD



273145 / LINV



273155 / LINV



273165 / WGMO



273175 / WGMO



273185 / WHBK



273195 / WHBK

FOOTWEAR



**WOMEN**

**ALLCOURT**

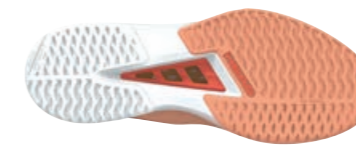
**CLAY COURT**



274105 / BKPL



274115 / BKPL



274145 / COWH



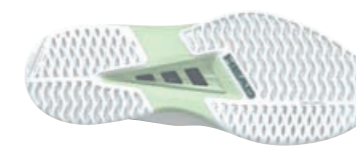
274155 / COWH



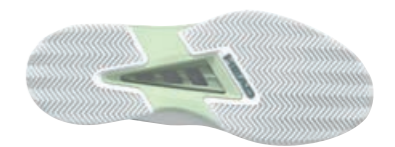
274165 / CWTB



274175 / CWTB



274185 / WHLN



274195 / WHLN



FOOTWEAR

# REVOLT PRO 4.5



Aggressive baseliners can dominate their opponents in the REVOLT PRO 4.5 shoe, which combines extreme durability and comfort with upgraded stability and flexibility.

**UPPER**

- Strong and durable mesh
- Engineered PU molded chassis
- 3D TPU heel counter
- Integrated lacing straps

**MIDSOLE**

- Higher heel to toe drop
- Triple density midsole
- 3D anti torsion midfoot shank



FOOTWEAR



**MEN**

**ALLCOURT**

**CLAY COURT**



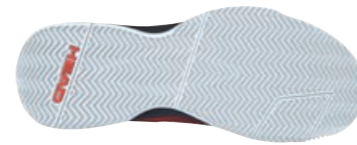
273225 / NVLI



273235 / NVLI



273245 / DBRD



273255 / DBRD



273265 / WHBK



273275 / WHBK

**WOMEN**

**ALLCOURT**

**CLAY COURT**



274205 / BKPL



274215 / BKPL



274225 / COWH



274235 / COWH



274245 / WHTB



274255 / WHTB

## REVOLT EVO 2.0



Experience pure comfort in the REVOLT EVO 2.0 with plenty of cushioning, padding and flexibility as well as an extra-wide fit.

### UPPER

Breathable and lightweight mesh  
Integrated lacing straps  
Comfortable tongue and collar padding  
Toe and medial protection

### MIDSOLE

Higher heel to toe drop  
Triple density midsole  
3D anti torsion midfoot shank

### MEN



### ALLCOURT



273325 / NVLI

### CLAY COURT



273335 / NVLI



273345 / WHBK

### WOMEN



### ALLCOURT



274305 / BKPL



274315 / WHTQ

## SPRINT EVO 3.5 CLAY



Built for speed on a clay court. The SPRINT EVO 3.5 CLAY offers lightweight performance, comfort and breathability, with Lockdown Strap technology to keep your foot in place and a full clay herringbone outsole to enhance traction.

### UPPER

Breathable and lightweight mesh  
Integrated lacing straps  
Comfortable tongue and collar padding  
Toe and medial protection

### MIDSOLE

Higher heel to toe drop  
Triple density midsole  
3D anti torsion midfoot shank

### MEN



### CLAY COURT



273395 / BKBL

## SPRINT EVO 3.5 CLAY



Built for speed on a clay court. The SPRINT EVO 3.5 CLAY offers lightweight performance, comfort and breathability, with Lockdown Strap technology to keep your foot in place and a full clay herringbone outsole to enhance traction.

### UPPER

Breathable and lightweight mesh  
Integrated lacing straps  
Comfortable tongue and collar padding  
Toe and medial protection

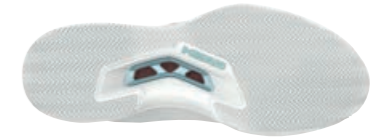
### MIDSOLE

Higher heel to toe drop  
Triple density midsole  
3D anti torsion midfoot shank

### WOMEN



### CLAY COURT



274395 / WHTQ

## SPRINT TEAM 4.0



Lightweight, breathable and refreshed with a new, modern design, the SPRINT TEAM 4.0 offers straight-out-of-the-box comfort for beginner to advanced players (of all levels).

### UPPER

Breathable and lightweight mesh  
Comfortable lining materials  
Toe and medial protection

### MIDSOLE

Low-to-the-ground  
Minimal heel-to-toe offset  
Torsion shank

### MEN



### ALLCOURT



273405 / DBRD

### CLAY COURT



273415 / DBRD



273425 / NVLI



273435 / NVLI



273445 / WHBK



273455 / WHBK

### WOMEN



### ALLCOURT

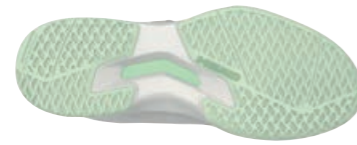


274405 / TBCW

### CLAY COURT



274415 / TBCW



274425 / CWLN



274435 / CWLN



274445 / WHCO



274455 / WHCO

## REVOLT COURT



Designed for casual weekend players and serious beginners, this shoe delivers lightweight comfort and modern style.

### UPPER

Breathable mesh  
Durable synthetic leather  
Comfortable lining materials

### MIDSOLE

EVA midsole for great cushioning

### MEN



### ALLCOURT



273505 / BKGR



273515 / WHPG

### WOMEN



### ALLCOURT



274505 / BKPL



274515 / WHGR

FOOTWEAR

## REVOLT PRO 4.5 JUNIOR



Engineered for competitive juniors who are aggressive from the baseline, this shoe is a close takedown of the adult version and offers superb durability.

**UPPER**

- Strong and durable mesh
- Engineered PU molded chassis
- Internal heel counter
- Integrated lacing straps

**MIDSOLE**

- Comfortable EVA midsole
- Torsion shank

**JUNIOR**

**ALLCOURT**

**CLAY COURT**



275205 / NVLI



275215 / NVLI



275225 / RDDB



275235 / RDDB



275245 / WHBK



275255 / WHBK

FOOTWEAR

## SPRINT PRO 4.0 JUNIOR



Lightweight, breathable comfort meets fresh style in the SPRINT PRO 4.0 JUNIOR. With a new, all-court outsole, this is a highly versatile shoe for ambitious juniors as well as for young players looking to have fun.

**UPPER**

- Lightweight, breathable mesh
- Triangle lacing strap
- Toe and medial protection

**MIDSOLE**

- Comfortable EVA midsole
- Lightweight and responsive

**JUNIOR**

**ALLCOURT**



275305 / DBRD



275315 / LINV



275325 / WHBK

PERFORMANCE

VISION

CLUB

OFF COURT

ACCESSORIES

FOOTWEAR

SIZING

## SPRINT COURT 4.0 JUNIOR



Playful style is mixed with lightweight, breathable comfort in the SPRINT COURT 4.0 JUNIOR, which is perfect for young players looking to have fun on court. Upgraded with a new, breathable mesh and a new, all-court outsole.

### UPPER

Breathable mesh  
Durable synthetic leather  
Soft collar and lining materials

### MIDSOLE

Comfortable EVA midsole  
Lightweight and responsive

### JUNIOR



### ALLCOURT



275405 / DBRD



275415 / LINV



275425 / WHTQ



275435 / WHBK

## SPRINT VELCRO 4.0 KIDS



With its playful style and a Velcro closure for an easy on and off, the SPRINT VELCRO 4.0 KIDS is perfect for kids aged 4-10 looking to have fun. Kids can also wear this shoe - refreshed with a new breathable mesh and a new all-court outsole - for other sports.

### UPPER

Breathable mesh  
Durable synthetic leather  
Elastic laces and velcro  
Soft collar and lining materials

### MIDSOLE

Comfortable EVA midsole  
Lightweight and responsive

### KIDS



### ALLCOURT



275505 / DBRD



275525 / WHTQ



275535 / WHBK

### MEN'S SIZES

UK	5.5	6	6.5	7	7.5	8	8.5	9	9.5	10	10.5	11	11.5	12	12.5	13
US	6	6.5	7	7.5	8	8.5	9	9.5	10	10.5	11	11.5	12	12.5	13	13.5
EU	38.5	39	40	40.5	41	42	42.5	43	44	44.5	45	46	46.5	47	48	48.5
CM	24.5	25	25.5	26	26.5	27	27.5	28	28.5	29	29.5	30	30.5	31	31.5	32

### WOMEN'S SIZES

UK	3.5	4	4.5	5	5.5	6	6.5	7	7.5	8	8.5	9
US	5	5.5	6	6.5	7	7.5	8	8.5	9	9.5	10	10.5
EU	36	36.5	37	38	38.5	39	40	40.5	41	42	42.5	43
CM	22.5	23	23.5	24	24.5	25	25.5	26	26.5	27	27.5	28

### JUNIOR'S SIZES

UK	13 K	13.5 K	1	1.5	2	2.5	3	3.5	4	4.5	5	5.5	6	6.5
US	13.5	1	1.5	2	2.5	3	3.5	4	4.5	5	5.5	6	6.5	7
EU	31.5	32	33	33.5	34	34.5	35	36	36.5	37	38	38.5	39	40
CM	19.5	20	20.5	21	21.5	22	22.5	23	23.5	24	24.5	25	25.5	26

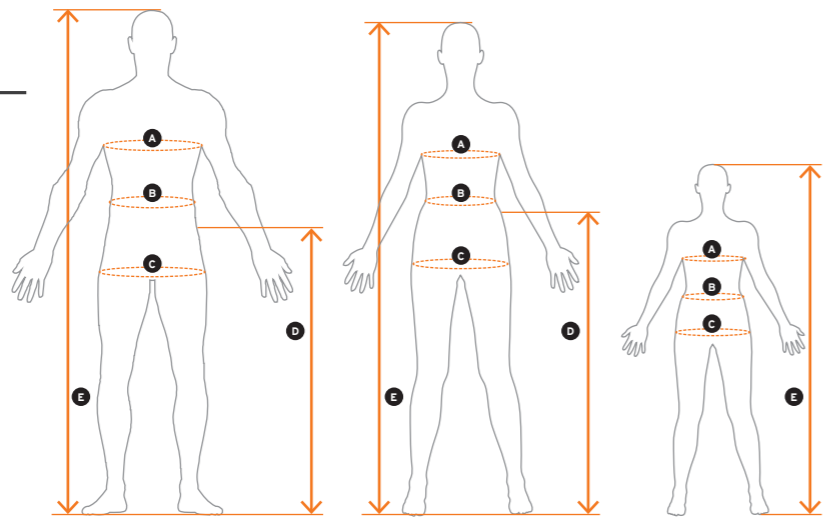
### KIDS SIZES

UK	9.5 K	10 K	10.5 K	11 K	11.5 K	12 K	12.5 K	13 K	13.5 K	1	1.5	2	2.5	3
US	10	10.5	11	11.5	12	12.5	13	13.5	1	1.5	2	2.5	3	3.5
EU	27	27.5	28	29	30	30.5	31	31.5	32	33	33.5	34	34.5	35
CM	16	16.5	17	17.5	18	18.5	19	19.5	20	20.5	21	21.5	22	22.5

SIZING CHARTS

HOW TO MEASURE

- A Chest circumference
- B Waist circumference (at smallest waist point)
- C Hip circumference
- D Outerside length (until hip bone)
- E Total height



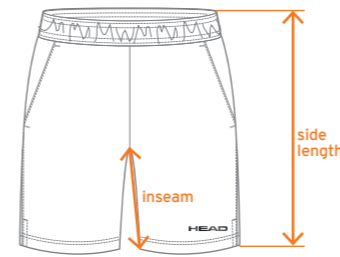
SIZING RANGE

PERFORMANCE VISION CLUB OFF COURT	SIZE RANGE
MEN	XS - 3XL
WOMEN	XXS - 3XL
UNISEX	XS - 3XL
JUNIORS/KIDS	128 - 176
TODDLER	104 - 122
PETITE MEN	S - XL
PETITE WOMEN	XS - L

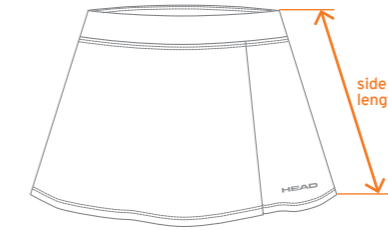
SIDE LENGTH OVERVIEW

MEN: L / WOMEN: S / JUNIOR: 140 / TODDLER: 110 / UNISEX: L

HOW TO MEASURE side & inseam length for shorts



HOW TO MEASURE side length for skorts



Men: Size L/50/52  
Women: Size S/36/38  
Unisex: L  
Junior: Size 140  
Toddler: Size 110

SIZING CHART MEN	44/46 XS	46/48 S	48/50 M	50/52 L	52/54 XL	54/56 2XL	56/58 3XL
A CHEST in cm	89-93	94-98	99-103	104-108	109-113	114-119	120-126
B WAIST in cm	75-78	79-82	83-86	87-90	91-95	96-102	103-110
C HIP in cm	93-96	97-100	101-104	105-108	109-112	113-118	119-126
D SIDE LENGTH in cm	98-99	100-101	102-103	104-105	106-107	108-109	110-111

SIZING CHART WOMAN	32/34 XXS	34/36 XS	36/38 S	38/40 M	40/42 L	42/44 XL	44/46 2XL	46/48 3XL
A CHEST in cm	79-82	83-86	87-90	91-94	95-98	99-103	104-109	110-116
B WAIST in cm	62-65	66-69	70-73	74-77	78-81	82-86	87-93	94-100
C HIP in cm	89-92	93-96	97-100	101-104	105-108	109-113	114-119	120-125
D SIDE LENGTH in cm	94-95	96-97	98-99	100-101	102-103	104-105	106-107	108-109

SIZING CHART JUNIOR/TODDLER	104 4XS	110 3XS	116 XXS	122 XS	128 S	140 M	152 L	164 XL	176 XXL
A CHEST in cm	56-58	57-59	58-62	61-65	64-68	69-73	74-78	79-83	84-88
B WAIST in cm	51-52	53-54	55-56	57-59	60-62	63-65	66-68	69-71	72-74
C HIP in cm	57-59	60-62	63-65	66-68	69-72	73-76	77-80	81-84	85-88
E TOTAL HEIGHT in cm	100-106	105-112	113-118	119-123	124-135	136-147	148-159	160-169	170-176

Petite (small) sizes are specially designed for women & men who have a smaller body size according to the norm. The items are proportionally smaller in waist and length.

SIZING CHART MEN PETITE (EU/FR/IT/ES)	S	M	L	XL
A CHEST in cm	94-98	99-103	104-108	109-113
B WAIST in cm	79-82	83-86	87-90	91-95
C HIP in cm	95-98	99-102	103-106	107-110
E TOTAL HEIGHT in cm	165-170	165-170	170-175	170-175

SIZING CHART WOMEN PETITE (EU)	XS	S	M	L
A CHEST in cm	83-86	87-90	91-95	96-100
B WAIST in cm	66-69	70-73	74-78	79-82
C HIP in cm	93-96	97-100	101-104	105-108
E TOTAL HEIGHT in cm	155-160	155-160	160-165	160-165

INTERNATIONAL SIZINGS

MEN	44/46	46/48	48/50	50/52	52/54	54/56	56/58
EU	44/46	46/48	48/50	50/52	52/54	54/56	56/58
US	XS	S	M	L	XL	XXL	XXXL
FR	44/46	46/48	48/50	50/52	52/54	54/56	56/58
IT/ES	44/46	46/48	48/50	50/52	52/54	54/56	56/58
UK	36/38	38/40	40/42	42/44	44/46	46/48	48/50

WOMAN	32/34	34/36	36/38	38/40	40/42	42/44	44/46	46/48
EU	32/34	34/36	36/38	38/40	40/42	42/44	44/46	46/48
US	XXS	XS	S	M	L	XL	XXL	XXXL
FR	34/36	36/38	38/40	40/42	42/44	44/46	46/48	48/50
IT/ES	38/40	40/42	42/44	44/46	46/48	48/50	50/52	52/54
UK	4/6	6/8	8/10	10/12	12/14	14/16	16/18	18/20

JUNIOR/TODDLER	104 / 3-4y	110 / 4-5y	116 / 5-6y	122 / 6-7y	128 / 7-8y	140 / 9-10y	152 / 10-11y	164 / 12-14y	176 / 15-16y
	4XS	3XS	XXS	XS	S	M	L	XL	XXL

LINE	GENDER	SAP NO.	STYLE NAME	SIDE length/cm	SIDE length/inch	INSEAM length/cm	INSEAM length/inch
PERFORMANCE	W	814035	PERFORMANCE Skort Women	33,5	13,2	11,5	4,5
PERFORMANCE	W	814505	Petite PERFORMANCE Skort Women	28,5	11,2	10,5	4,1
PERFORMANCE	W	814884	PLAY Skort Women	35	13,8	11,5	4,5
PERFORMANCE	W	814874	PLAY Shorts Women	32,5	12,8	6,5	2,6
PERFORMANCE	W	814525	Petite PLAY Shorts Women	31,5	12,4	6,5	2,6
PERFORMANCE	W	814085	PERFORMANCE Track Pants Women	107	42,1	74,0	29,1
PERFORMANCE	W	814393	ATL Tech Marlene Pants Women	110	43,3	77,0	30,3
PERFORMANCE	W	814903	FLEX Seamless Tights Women	89	35,0		0,0
VISION	W	814285	DYNAMIC Skort Women	32	12,6	11,5	4,5
VISION	W	814305	DYNAMIC Shorts Women	32	12,6	5	2,0
VISION	W	814335	TECH Tights Women	91,5	36,0	67	26,4
VISION	W	814325	TECH 3/4 Tights Women	73	28,7	49	19,3
VISION	W	814714	TECH Short Thights Women	41,5	16,3	15,5	6,1
VISION	W	814315	TECH Panty Women	34,5	13,6	11	4,3
VISION	W	814295	MOVE Skort Women	35,5	14,0	9,5	3,7
VISION	W	814385	PRY Shorts Women	35	13,8	5	2,0
VISION	W	814355	BREAKER Pants Women	107	42,1	77	30,3
CLUB	W	814865	CLUB Skort Women	32,5	12,8	11	4,3
CLUB	W	814785	CLUB 3/4 Tights Skort Women	32,5	12,8	48	18,9
CLUB	W	814875	CLUB Skort Long Women	39,5	15,6	11	4,3
CLUB	W	814775	CLUB Shorts Women	37	14,6	13	5,1
CLUB	W	814795	CLUB Pants Women	101	39,8	76	29,9
CLUB	W	814835	CLUB ORIGINAL Shorts Women	31,5	12,4	7,5	3,0
CLUB	W	814855	CLUB ORIGINAL Pants Women	97,5	38,4	72,5	28,5
OFF COURT	W	814925	MOTION Sweat Pants Women	97,5	38,4	70	27,6
PERFORMANCE	M	811504	PERFORMANCE Shorts Men	51	20,1	22,5	8,9
PERFORMANCE	M	811515	Petite PERFORMANCE Shorts Men	46,5	18,3	19	7,5
PERFORMANCE	M	811125	PLAY Shorts Men	46	18,1	18,0	7,1
PERFORMANCE	M	811045	PERFORMANCE Pants Men	108	42,5	75,0	29,5
PERFORMANCE	M	811903	FLEX Seamless Tight Men	93	36,6		0,0
VISION	M	811255	POWER Shorts Men	43,5	17,1	19	7,5
VISION	M	811355	BREAKER Pants Men	108	42,5	74	29,1
CLUB	M	811765	CLUB Shorts Men	44	17,3	14	5,5
CLUB	M	811755	CLUB Bermudas Men	50,5	19,9	23	9,1
CLUB	M	811775	CLUB Pants Men	108,5	42,7	81,5	32,1
CLUB	M	811835	CLUB ORIGINAL Bermudas Men	49,5	19,5	23,5	9,3
CLUB	M	811845	CLUB ORIGINAL Pants Men	105,5	41,5	78	30,7
OFF COURT	M	811955	MOTION Sweat Pants Men	105,5	41,5	78	30,7
OFF COURT	UNISEX	811935	MOTION Sweat Shorts Unisex	46	18,1	18,7	7,4
CLUB	G	816845	CLUB Skort Girls	28,5	11,2	13	5,1
CLUB	G	816835	CLUB ORIGINAL Shorts Girls	28	11,0	7	2,8
CLUB	B	816349	CLUB Bermudas Junior	39	15,4	17	6,7
CLUB	B	816795	CLUB ORIGINAL Bermudas Boys	39	15,4	18	7,1
CLUB	JR	816775	CLUB Pants Junior	83,5	32,9	63	24,8
CLUB	JR	816805	CLUB ORIGINAL Pants Junior	84,5	33,3	62,5	24,6
VISION	TODDLER	816923	TENNIS Skirt Girls	24	9,4	8,5	3,3
VISION	TODDLER	816933	TENNIS Shorts Junior	21	8,3	7	2,8

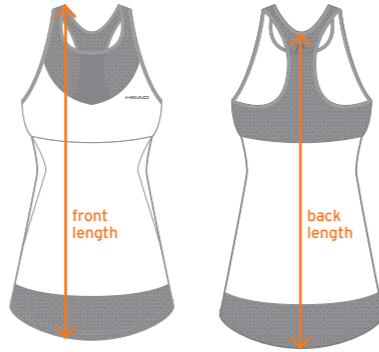
TOPS / FRONT & BACK LENGTH OVERVIEW

MEN: L / WOMEN: S / JUNIOR: 140 / TODDLER: 110 / UNISEX: L

HOW TO MEASURE  
front & back length for shirts



HOW TO MEASURE  
front & back length for dresses



Front length taken from highest shoulder point (HSP) until bottom hem.

Back length taken from highest center back (CB) until bottom hem.

Men: Size L/50/52  
Women: Size S/36/38  
Junior: Size 140  
Toddler: Size 110  
Unisex: L

LINE	GENDER	SAP NO.	STYLE NAME	FRONT length/cm (from HSP)	FRONT length/inch (from HSP)	BACK length/cm (from CB)	BACK length/inch (from CB)
PERFORMANCE	W	814015	PERFORMANCE T-Shirt Women	64	25,2	62,5	24,6
PERFORMANCE	W	814535	Petite PERFORMANCE T-Shirt Women	60	24,0	58,5	23,4
PERFORMANCE	W	814025	PERFORMANCE Tank Top Women	62	24,4	62	24,4
PERFORMANCE	W	814045	PERFORMANCE Dress Women	80	31,5	80	31,5
PERFORMANCE	W	814545	Petite PERFORMANCE Dress Women	74	29,5	73,5	29,5
PERFORMANCE	W	814115	PLAY Tech Polo Shirt Women	57	22,4	54,5	21,5
PERFORMANCE	W	814125	PLAY Tech T-Shirt Women	57	22,4	53	20,9
PERFORMANCE	W	814135	PLAY Tech Tank Top Women	63	24,8	62	24,4
PERFORMANCE	W	814515	Petite PLAY Tech Tank Top Women	58	22,8	57	22,4
PERFORMANCE	W	814145	PLAY Tech Dress Women	82	32,3	80	31,5
PERFORMANCE	W	814503	FLEX Seamless Bra Women	33	13,0	27,5	10,8
PERFORMANCE	W	814913	FLEX Seamless LS Women	64	25,2	61	24,0
PERFORMANCE	W	814075	PERFORMANCE Track Jacket Women	62,5	24,6	62,5	24,6
PERFORMANCE	W	814343	ATL Trench Parka Women	97	38,2	104,5	41,1
VISION	W	814205	TIE-BREAK T-Shirt Women	64	25,2	63,5	25,0
VISION	W	814225	SPIRIT Tank Top Women	60	23,6	42,5	16,7
VISION	W	814435	SPIRIT II Tank Top Women	62	24,4	49	19,3
VISION	W	814265	MOVE Crop Top Women	35	13,8	30	11,8
VISION	W	814235	MOVE Tank Top Women	51	20,1	50	19,7
VISION	W	814375	PRY CROP Polo Women	53	20,9	50,5	19,9
VISION	W	814275	SPIRIT Dress Women	80	31,5	61	24,0
VISION	W	814445	RAINBOW T-Shirt Women	64,5	25,4	63,5	25,0
VISION	W	814395	LARA T-Shirt Women	64,5	25,4	63,5	25,0
VISION	W	814405	VISION T-Shirt Women	64,5	25,4	63,5	25,0
VISION	W	814425	RALLY Hoodie Women	66	26,0	64,5	25,4
VISION	W	814415	RALLY Crewneck Women	78	30,7	76,0	29,9
VISION	W	814345	BREAKER Jacket Women	62,5	24,6	60,75	23,9
VISION	W	814365	BLUR Jacket Women	62	24,4	60,5	23,8
CLUB	W	814715	CLUB 25 TECH Polo Shirt Women	64	25,2	63	24,8
CLUB	W	814725	CLUB 25 TECH T-Shirt Women	64	25,2	63	24,8
CLUB	W	814735	CLUB 25 TECH Tank Top Women	61	24,0	56	22,0
CLUB	W	814745	CLUB 25 Dress Women	82	32,3	79	31,1
CLUB	W	814845	CLUB ORIGINAL T-Shirt Women	64,5	25,4	63,5	25,0
CLUB	W	814815	CLUB ORIGINAL Hoodie FZ Women	66,5	26,2	65,5	25,8
CLUB	W	814825	CLUB ORIGINAL Hoodie Women	66,5	26,2	65,5	25,8
CLUB	W	814695	CLUB Lightweight Vest Women	60	23,6	60,5	23,8
CLUB	W	814755	CLUB 25 Jacket Women	65	25,6	64,5	25,4
CLUB	W	814705	CLUB COACH Jacket Women	65	25,6	63,5	25,0
CLUB	W	814805	CLUB KINETIC Jacket Women	66	26,0	66	26,0
CLUB	W	814765	CLUB 25 TECH Hoodie Women	65	25,6	70	27,6
OFF COURT	W	814905	MOTION T-Shirt Women	63	24,8	51,5	20,3
OFF COURT	W	814504	CLASSIC Polo Women	65,5	25,8	65,5	25,8
OFF COURT	W	814935	CLASSIC Pullover Women	70,5	27,8	69,5	27,4
PERFORMANCE	M	811005	PERFORMANCE Polo Shirt Men	76	29,9	76,5	30,1
PERFORMANCE	M	811505	Petite PERFORMANCE Polo Shirt Men	73	28,7	73,5	28,9
PERFORMANCE	M	811015	PERFORMANCE T-Shirt Men	76	29,9	75,5	29,7
PERFORMANCE	M	811525	Petite PERFORMANCE T-Shirt Men	73	28,7	72,5	28,5
PERFORMANCE	M	811075	PLAY Tech Polo Shirt Men	75	29,5	75,5	29,7
PERFORMANCE	M	811085	PLAY Tech T-Shirt Men	75	29,5	74,5	29,3
PERFORMANCE	M	811913	FLEX Seamless LS Men	70	27,6	67	26,4
PERFORMANCE	M	811035	PERFORMANCE Troyer Men	74	29,1	72,5	28,5
VISION	M	811205	SLICE Polo Shirt Men	75	29,5	75,5	29,7
VISION	M	811215	SLICE T-Shirt Men	75	29,5	75,5	29,7
VISION	M	811225	SLICE Tank Top	78	30,7	76,5	30,1
VISION	M	811265	SLICE II T-Shirt Men	75	29,5	75,5	29,7
VISION	M	811235	TOPSPIN T-Shirt Men	75,5	29,7	74,5	29,3
VISION	M	811435	RAINBOW T-Shirt Men	75,5	29,7	74	29,1
VISION	M	811395	CARL T-Shirt Men	75,5	29,7	74	29,1
VISION	M	811405	VISION T-Shirt Men	75,5	29,7	74	29,1

LINE	GENDER	SAP NO.	STYLE NAME	FRONT length/cm (from HSP)	FRONT length/inch (from HSP)	BACK length/cm (from CB)	BACK length/inch (from CB)
VISION	M	811245	TOPSPIN Hoodie Men	75	29,5	75,5	29,7
VISION	M	811425	RALLY Hoodie Men	66	26,0	64,5	25,4
VISION	M	811415	RALLY Crewneck Men	78	30,7	76,0	29,9
VISION	M	811345	BREAKER Jacket Men	74	29,1	72,5	28,5
VISION	M	811365	BLUR Jacket Men	75	29,5	73,5	28,9
CLUB	M	811715	CLUB 25 TECH Polo Shirt Men	75,5	29,7	76	29,9
CLUB	M	811725	CLUB 25 TECH T-Shirt Men	75,5	29,7	76	29,9
CLUB	M	811735	CLUB 25 TECH Hoodie Men	73,5	28,9	73,5	28,9
CLUB	M	818811	SIMPLE T-Shirt Men	75,5	29,7	76	29,9
CLUB	M	811855	CLUB ORIGINAL T-Shirt Men	64,5	25,4	63,5	25,0
CLUB	M	811815	CLUB ORIGINAL Hoodie FZ Men	74,5	29,3	73,5	28,9
CLUB	M	811825	CLUB ORIGINAL Hoodie Men	76,5	30,1	75	29,5
CLUB	M	811745	CLUB 25 Jacket Men	72	28,3	74	29,1
CLUB	M	811795	CLUB COACH Jacket Men	74	29,1	75,8	29,8
CLUB	M	811805	CLUB KINETIC Jacket Men	74	29,1	76	29,9
CLUB	M	811785	CLUB Lightweight Vest Men	70	27,6	71	28,0
OFF COURT	M	811945	MOTION T-Shirt Men	75,5	29,7	74,8	29,4
OFF COURT	M	811364	CLASSIC Polo Men	73,5	28,9	74,3	29,3
OFF COURT	M	811965	CLASSIC Pullover Men	72,5	28,5	71,5	28,1
PERFORMANCE	UNI	811434	PERFORMANCE Capsule Sweatshirt Unisex	72,5	28,5	68,5	27,0
OFF COURT	UNI	811915	MOTION Crewneck Unisex	72,5	28,5	69	27,2
OFF COURT	UNI	811905	MOTION Crewneck Print Unisex	72,5	28,5	69	27,2
VISION	G	816225	SPIRIT Tank Top Girls	51	20,1	56	22,0
VISION	G	816275	SPIRIT Dress Girls	65	25,6	52	20,5
VISION	B	816215	SLICE T-Shirt Boys	55,5	21,9	54	21,3
VISION	B	816255	SLICE II T-Shirt Boys	55,5	21,9	54	21,3
VISION	G	816335	TIE-BREAK T-Shirt Girls	50	19,7	49,5	19,5
VISION	JR	816345	RAINBOW T-Shirt Junior	57	22,4	55,5	21,9
VISION	JR	816405	VISION T-Shirt Junior	57	22,4	55,5	21,9
VISION	B	816235	TOPSPIN T-Shirt Boys	55,5	21,9	55,5	21,9
VISION	B	816245	TOPSPIN Hoodie Boys	53,5	21,1	54	21,3
CLUB	G	816735	CLUB 25 Tank Top Girls	51	20,1	49	19,3
CLUB	G	816725	CLUB 25 Tech T-Shirt Girls	51	20,1	50,5	19,9
CLUB	B	816765	CLUB 25 Tech T-Shirt Boys	54	21,3	53	20,9
CLUB	B	816745	CLUB 25 Jacket Junior	56	22,0	57,5	22,6
CLUB	JR	816785	CLUB ORIGINAL T-Shirt Junior	57	22,4	55,5	21,9
CLUB	JR	816825	CLUB ORIGINAL Hoodie Junior	55	21,7	53	20,9
VISION	G	816903	TENNIS Dress Girls	55	21,7	54	21,3
VISION	G	816913	TENNIS Tank Top Girls	39,5	15,6	38	15,0
VISION	B	816943	TENNIS T-Shirt Boys	44	17,3	44	17,3

PERFORMANCE WOMEN

PERFORMANCE T-Shirt Women  
814015\_Page 12



Petite PERFORMANCE T-Shirt Women  
814535\_Page 12



PERFORMANCE Tank Top Women  
814025\_Page 13



PERFORMANCE Skort Women  
814035\_Page 13



Petite PERFORMANCE Skort Women  
814505\_Page 14



PERFORMANCE Dress Women  
814045\_Page 14



Petite PERFORMANCE Dress Women  
814545\_Page 15



PLAY TECH Polo Shirt Women  
814115\_Page 15



PLAY Tech T-Shirt Women  
814125\_Page 16



PLAY Tech Tank Top Women  
814135\_Page 16



Petite PLAY Tech Tank Top Women  
814515\_Page 17



PLAY Skort Women  
814884\_Page 17



PLAY Shorts Women  
814874\_Page 18



Petite PLAY Shorts Women  
814525\_Page 18



PLAY Tech Dress Women  
814145\_Page 19



ATL Trench Parka Women  
814343\_Page 19



ATL Tech Marlene Pants Women  
814393\_Page 20



FLEX Seamless Bra Women  
814503\_Page 20



FLEX Seamless LS Women  
814913\_Page 21



FLEX Seamless Tight Women  
814903\_Page 21



PERFORMANCE MEN

PERFORMANCE Polo Shirt Men  
811005\_Page 24



Petite PERFORMANCE Polo Shirt Men  
811505\_Page 24





PERFORMANCE MEN /UNISEX

PERFORMANCE T-Shirt Men  
811015\_Page 25



Petite PERFORMANCE T-Shirt Men  
811525\_Page 25



PERFORMANCE Shorts Men  
811504\_Page 26



Petite PERFORMANCE Shorts Men  
811515\_Page 26



PLAY Tech Polo Shirt Men  
811075\_Page 27



PLAY Tech T-Shirt Men  
811085\_Page 27



PLAY Shorts Men  
811125\_Page 28



FLEX Seamless LS  
811913\_Page 28



FLEX Seamless Tight Men  
811903\_Page 29



PERFORMANCE UNISEX

PERFORMANCE CAPSULE Sweatshirt Unisex  
811434\_Page 31



VISION WOMEN

VISION WOMEN

TIE-BREAK T-Shirt Women  
814205\_Page 34



SPIRIT Tank Top Women  
814225\_Page 34



SPIRIT II Tank Top Women  
814435\_Page 35



MOVE Tank Top Women  
814235\_Page 35



MOVE Crop Top Women  
814265\_Page 36



SPIRIT Dress Women  
814275\_Page 36



DYNAMIC Skort Women  
814285\_Page 37



MOVE Skort Women  
814295\_Page 37



DYNAMIC Shorts Women  
814305\_Page 38



TECH Tights Women  
814335\_Page 38



TECH 3/4 Tights Women  
814325\_Page 39



TECH Short Tights Women  
814714\_Page 39



TECH Panty Women  
814315\_Page 40



VISION Jacket Women  
814345\_Page 40



VISION Pants Women  
814355\_Page 41



BLUR Jacket Women  
814365\_Page 41



PRY Crop Polo Women  
814375\_Page 42



PRY Shorts Women  
814385\_Page 42



RAINBOW T-Shirt Women  
814445\_Page 43



LARA T-Shirt Women  
814395\_Page 43



VISION T-Shirt Women  
814405\_Page 44



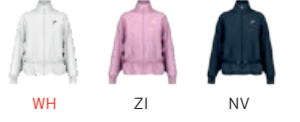
RALLY Crewneck Women  
814415\_Page 44



RALLY Hoodie Women  
814425\_Page 45



BREAKER Jacket Women  
814075\_Page 45



BREAKER Pants Women  
814085\_Page 46



VISION MEN

SLICE Polo Shirt Men  
811205\_Page 50



SLICE T-Shirt Men  
811215\_Page 50



SLICE II T-Shirt Men  
811265\_Page 51



SLICE Tank Top Men  
811225\_Page 51



TOPSPIN T-Shirt Men  
811235\_Page 52



TOPSPIN Hoodie Men  
811245\_Page 52



POWER Shorts Men  
811255\_Page 53



VISION Jacket Men  
811345\_Page 53



VISION Pants Men  
811355\_Page 54



BLUR Jacket Men  
811365\_Page 54



RAINBOW T-Shirt Men  
811435\_Page 55



CARL T-Shirt Men  
811395\_Page 55



VISION T-Shirt Men  
811405\_Page 56



RALLY Crewneck Men  
811415\_Page 56



RALLY Hoodie Men  
811425\_Page 57



BREAKER Jacket Men  
811035\_Page 57



BREAKER Pants Men  
811045\_Page 58



VISION JUNIOR

TIE-BREAK T-Shirt Girls  
816335\_Page 62



SPIRIT Tank Top Girls  
816225\_Page 62



SPIRIT Dress Girls  
816275\_Page 63



SLICE T-Shirt Boys  
816215\_Page 63



SLICE II T-Shirt Boys  
816255\_Page 64



TOPSPIN T-Shirt Boys  
816235\_Page 64



TOPSPIN Hoodie Boys  
816245\_Page 65



Rainbow T-Shirt Junior  
816345\_Page 65



VISION T-Shirt Junior  
816405\_Page 66



TENNIS Dress Girls  
816903\_Page 66



TENNIS Tank Top Girls  
816913\_Page 67



TENNIS Skirt Girls  
816923\_Page 67



TENNIS T-Shirt Boys  
816943\_Page 68



TENNIS Shorts Junior  
816933\_Page 68

**CLUB WOMEN**



CLUB 25 TECH Polo Shirt Women  
814715\_Page 72



CLUB 25 TECH T-Shirt Women  
814725\_Page 72



CLUB 25 Tech Tank Top Women  
814735\_Page 73



CLUB 25 TECH Hoodie Women  
814765\_Page 73



CLUB 25 Jacket Women  
814755\_Page 74



CLUB 25 Dress Women  
814745\_Page 74



CLUB Basic Skort Women  
814399\_Page 75



CLUB Basic Skort Long Women  
814539\_Page 75



CLUB 3/4 Tights Skort Women  
814409\_Page 76



CLUB Shorts Women  
814379\_Page 76



CLUB Pants Women  
814329\_Page 77



CLUB ORIGINAL T-Shirt Women  
814845\_Page 77



CLUB ORIGINAL Hoodie FZ Women  
814815\_Page 78



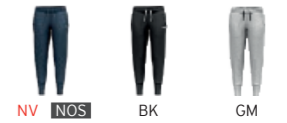
CLUB ORIGINAL Hoodie Women  
814825\_Page 78



CLUB ORIGINAL Shorts Women  
814835\_Page 79



CLUB ORIGINAL Pants Women  
814855\_Page 79



CLUB Lightweight Vest Women  
814695\_Page 80



CLUB COACH Jacket Women  
814705\_Page 80



CLUB KINETIC Jacket Women  
814805\_Page 81



**CLUB MEN**

CLUB 25 TECH Polo Shirt Men  
811715\_Page 84



CLUB 25 TECH T-Shirt Men  
811725\_Page 84



CLUB MEN

SIMPLE T-Shirt Men  
818811\_Page 85



CLUB 25 TECH Hoodie Men  
811735\_Page 85



CLUB 25 Jacket Men  
811745\_Page 86



CLUB Shorts Men  
811379\_Page 86



CLUB Bermudas Men  
811389\_Page 87



CLUB Pants Men  
811329\_Page 87



CLUB ORIGINAL T-Shirt Men  
811855\_Page 88



CLUB ORIGINAL Hoodie FZ Men  
811815\_Page 88



CLUB ORIGINAL Hoodie Men  
811825\_Page 89



CLUB ORIGINAL Bermudas Men  
811835\_Page 89



CLUB ORIGINAL Pants Men  
811845\_Page 90



CLUB MEN / JUNIOR

CLUB Lightweight Vest Men  
811785\_Page 90



CLUB COACH Jacket Men  
811795\_Page 91



CLUB KINETIC Jacket Men  
811805\_Page 91



CLUB JUNIOR

CLUB 25 Tech T-Shirt Girls  
816725\_Page 93



CLUB 25 Tank Top Girls  
816735\_Page 93



CLUB Basic Skort Girls  
816459\_Page 94



CLUB ORIGINAL Shorts Girls  
816835\_Page 94



CLUB 25 Tech T-Shirt Boys  
816765\_Page 95



CLUB 25 Jacket Junior  
816745\_Page 95



CLUB ORIGINAL Bermudas Boys  
816795\_Page 96



CLUB Bermudas Junior  
816349\_Page 96



CLUB Pants Junior  
816319\_Page 97



CLUB ORIGINAL T-Shirt Junior  
816785\_Page 97



CLUB ORIGINAL Hoodie Junior  
816825\_Page 98



CLUB ORIGINAL Pants Junior  
816805\_Page 98



OFF COURT WOMEN

PROPLAYER T-Shirt Women  
814095\_Page 102



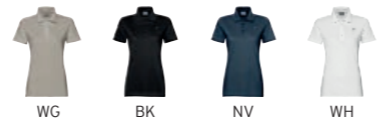
MOTION T-Shirt Women  
814905\_Page 102



MOTION Sweat Pants Women  
814925\_Page 103



CLASSIC Polo Women  
814504\_Page 103



CLASSIC Pullover Women  
814935\_Page 104



OFF COURT MEN

PROPLAYER T-Shirt Men  
811885\_Page 108



MOTION T-Shirt Men  
811945\_Page 108



MOTION Sweat Pants Men  
811955\_Page 109



CLASSIC Polo Men  
811364\_Page 109



CLASSIC Pullover Men  
811965\_Page 110



OFF COURT UNISEX

PROPLAYER Crewneck Unisex  
811865\_Page 114



PROPLAYER Sweat Shorts Unisex  
811875\_Page 114



MOTION Crewneck Print Unisex  
811905\_Page 115



MOTION Crewneck Unisex  
811915\_Page 115



MOTION Sweat Shorts Unisex  
811935\_Page 116



ACCESSORIES

BANDANA  
817005\_Page 120



VISION Beanie  
817015\_Page 120



SOCKS TENNIS 2P STRIPE QUARTER  
811509\_Page 120



SOCKS TENNIS 3P PERFORMANCE  
811904\_Page 121



SOCKS TENNIS 3P CLUB  
811914\_Page 121



SOCKS TENNIS 3P SNEAKER  
811934\_Page 121



SOCKS TENNIS 1P CREW ATHLETES  
811954\_Page 122



SOCKS 2P TENNIS Junior  
816131\_Page 122



Pro Player Bandana  
287099\_Page 122



Pro Player Cap  
287115\_Page 123



Pro Player Womens Visor  
287135\_Page 123



Kids Pro Player Cap  
287125\_Page 123



Performance Cap  
287104\_Page 124



Performance Visor  
287105\_Page 124



Promotion Cap  
287299\_Page 124



Five Panel Tour Cap  
287834\_Page 125



Delta Flexfit Cap  
287814\_Page 125



Bucket Hat  
287154\_Page 125



Baseball Cap  
287145\_Page 126



Kids Cap Monster  
287184\_Page 126



Kids Cap Owl  
287194\_Page 126

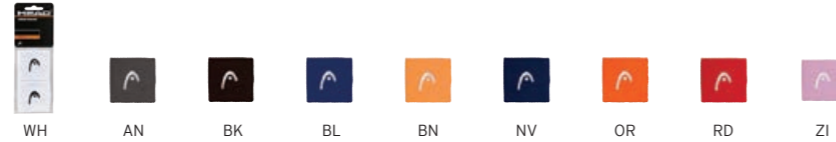


Headband  
285080\_Page 127



## ACCESSORIES

Wristband 2.5"  
285050\_Page 127



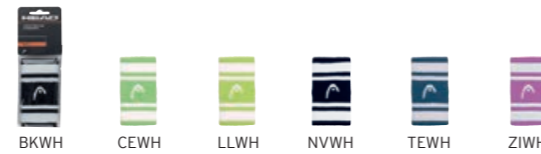
Wristband 5"  
285070\_Page 127



Wristband striped 2.5  
285865\_Page 128



Wristband striped 5  
285875\_Page 128



## CONTACT DETAILS

### HEAD TRADE

**HEAD Sport GmbH**  
Wuhrkopfweg 1  
6921 Kennelbach  
Austria  
T. +43 5574 608 0  
E. trade@head.com

**Argentina**  
Sports & Adventure S.A.  
T. +54911 69812847  
E. recepcion@grupovleytes.com

**Azerbaijan**  
Rich Company  
T. +994 51 742 0089  
E. office@richsport.az

**Belarus**  
Shkursky Alexandr Viktorovich  
T. +375 296206131  
E. alex@cast.by

**Bulgaria**  
Miras-Krastevi LTD  
T. +359 88 206 4060  
E. office@miras-sport.com

**Chile**  
Deportes Sparta SPA.  
T. +56 2 28287700  
E. contacto@sparta.cl

**China**  
HLA Group Corp. LTD  
T. +86 021 52665131  
E. eudorali@hellan.ch

**Colombia**  
ENRO LTDA  
T. +57 571 8088251  
E. robertosilvap@enrocolombia.com.co

**Croatia & BiH**  
MARINES d.o.o.  
T. +385 1 6055 625  
E. andrej@marines.hr

**Estonia**  
Sportland International Group  
T. +372 6 548 434  
E. info@sportland.ee

**Ecuador**  
BRANDS INTERNATIONAL  
BUSINESS - BRANDSINC SA  
T. +593 9 9 3 061 634  
E. marketing@brandsinc.us

**Greece**  
Ionas Bros O.E.  
T. +30 210 2844484  
E. emilios@ionas.gr

**Hungary**  
Wintersport Co. Ltd.  
T. +36 (70) 508 95 56  
E. office@headtennis.hu

**Israel**  
Let's Go Pro  
T. +972 (54) 33 111 77  
E. roy@lets-go.co.il

**Kazakhstan**  
MAK ImpEx Ltd.  
T. +7 727 2663333  
E. makimpex.kz@gmail.com

**Lebanon**  
Mike Sport  
T. +961 1 8888 55  
E. mispo@mikesport.com

**Lithuania**  
Baltaura LT  
T. +37068743182  
E. baltaura@baltaura.lt

**Macedonia**  
VEKON INT DOOEL  
T. +389 7 039 3341  
E. r.kochovski@elteh.com.mk

**Mexico**  
UNION FRONTIERS  
T. +52 (01) 55 1934 02  
E. salvador@201oficial.com.mx

**New Zealand**  
Sportco Limited  
T. +64 9 527 6994  
E. jeff@sportco.co.nz

**Pakistan**  
Waldi Incorporation  
T. +92 (0) 321 8809044  
E. nhs@waldinc.biz

**Romania**  
Sport Intercom SRL  
T. +40 (0) 021 224 54 19  
E. adina@head-sport.ro

**Serbia**  
Kopf Sport d.o.o.  
T. +381 11 428 02 32  
E. office@kopfsport.rs

**Singapore**  
Enso Lifestyle  
T. +65 6278 8851  
E. sales@enso-lifestyle.com

**South Africa**  
Omni Sport CC  
T. +27 21 557 8380  
E. dentong@omni-sport.com

**South Korea**  
Kolon Industries  
T. +82 107 1359 770  
E. sangun\_kang@kolon.com

**Turkey**  
Sportcity Hakan Turnaoglu  
T. +90 532 351 9494  
E. hakan@sportcity.com.tr

**Ukraine**  
Extreme Style  
T. +380 97 511 6510  
E. denis@eltrade.com.ua

**Uzbekistan**  
MEGASHOP LLC  
T. +998 71 235 91 81  
E. buyer.hardgoods@union-space.com

**Vietnam**  
FORHEADS., JSC.  
T. +84 37 76 35 53  
E. head@forheads.vn

### HEAD UNITS

**Austria**  
HEAD Austria GmbH  
Tyroliaplatz 1  
2320 Schwechat, Austria  
T. +43 1 701 79 0  
E. info@at.head.com

**France**  
SAS HEAD France  
ZA des Condamines  
BP 29  
38320 Bresson  
T. +33 476 62 69 00

**Germany**  
HEAD Germany GmbH  
Velaskostr. 8  
85622 Feldkirchen, Germany  
T. +49 89 90 99 95 0  
E. info@de.head.com

**Italy**  
Mares Spa  
Salita Bonsen 4,  
San Pietro di Novella  
16035 Rapallo (GE), Italy  
T. +39 0185 2011  
E. info-head@it.head.com

**Japan**  
HEAD Japan Ltd.  
1-1-1, Higashi-Shinjuku  
Shinjuku-ku, Tokyo 162-8502, Japan  
T. +81 3 3342 1111  
E. info@jp.head.com

**Benelux**  
HEAD Benelux  
Plesmanstraat 1  
3833 LA Leusden  
The Netherlands  
T. +31 332030117  
E. info.benelux@head.com

**Poland**  
HEAD Poland Sp. z o.o.  
Ul. Rydlówka 20  
30-363 Kraków  
Poland  
T. +48 12 255 44 00  
E. info@pl.head.com

**Czech Republic and Slovakia**  
HEAD Sport s.r.o.  
Sportovni 457  
252 50 Vestec  
Czech Republic  
T. +420 267 281111  
E. info.czechia@head.com

**Spain**  
HEAD Spain SA  
Roger 65-67 5a  
08028 Barcelona, Spain  
T. +34 93 409 20 80  
E. info@es.head.com

**Switzerland**  
HEAD Switzerland AG  
Rothusstrasse 17  
6331 Hünenberg, Switzerland  
T. +41 41 767 07 07  
E. info@ch.head.com

**United Kingdom**  
HEAD UK Ltd.  
2 Beezon Road, Kendal,  
Cumbria  
LA9 6BW, United Kingdom  
T. +44 15 39 72 47 40  
E. info@uk.head.com

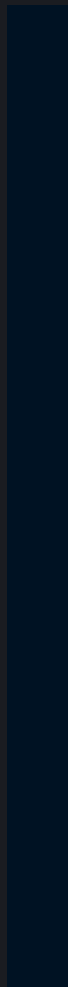
**Australia/ New Zealand**  
HEAD Oceania  
Suite 7, Level 3,  
Pinnacle Office Park  
4 Drake Avenue  
Macquarie Park  
NSW 2113, Australia  
T. +61 2 9453 2000  
E. salesau@head.com

**Sweden, Finland, Denmark**  
HEAD Scandinavia  
Prästvägen 2  
83752 Are  
Sweden  
T. +46 647 50610  
E. info.scandinavia@head.com

**Norway**  
HEAD Norway  
Vollsveien 13 H  
1366 Lysaker  
Norway  
T. +47 971 14 949  
E. info.norway@head.com



  
**HEAD**<sup>®</sup>



Art. Nr. 819005